



First STEPS
to your dream home

Contents

- Getting Started 2
- Which range suits my home? 4
- Products..... 6
 - Residential Series.....8
 - Metro Series.....16
 - APL Architectural Series.....24
 - ThermalHEART® 32
 - Klima Series 34
 - Smartwood 36
 - Picture windows 38
 - Roof windows 40
 - Entrance doors 42
 - Latitude44
 - Plasma.....44
 - Axis45
 - Classic.....45
 - Aquila.....46
 - Glass Plasma46
 - Lindo.....47
 - Finishes47
- Hardware 48
 - Urbo50
 - Miro52
 - Icon.....54
 - Elemental56
- Surface finishes 58
- Passive ventilation 60
- Glass options 62
- Customer Stories 64
 - Circling back.....66
 - Dune landing.....70
 - Push the limits74
 - Brain boxes78
 - Best-kept secrets82
- Window Configurations..... 86
- Door Configurations 87
- Care and Maintenance 88
- Home of quality brands 89





Versatility and excellence – that's what we've come to expect from First Windows & Doors.

Drawing on more than 30 years of experience in the market, First has evolved a diverse range of products united by a common theme of high performance, thermal efficiency and painstaking attention to detail in aesthetics and engineering.

With options to upgrade to the clean-lined Metro Series, the prestigious APL Architectural Series and the Klima Series range which provides the ultimate in thermal efficiency, First offers homeowners and designers the best possible solution to suit their particular project and budget.

It's called First for a reason.

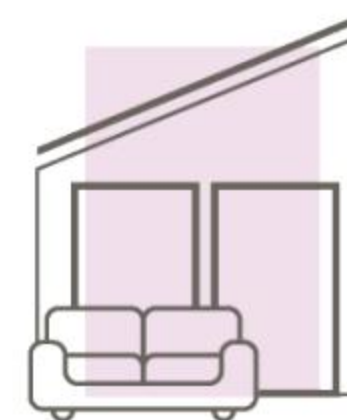
Getting Started

Simple steps to choosing the right windows and doors for you.



Step 1

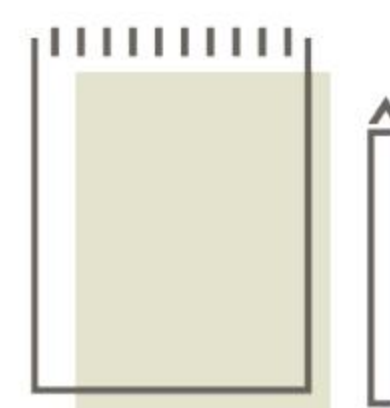
Consider how you will live in your home



- What is the landscape/environment like that you live in?
- How do you need your house to function?
- What life stage are you at?
Do you have children at home?
- Do you spend a lot of time using outdoor living or entertaining areas?

Step 2

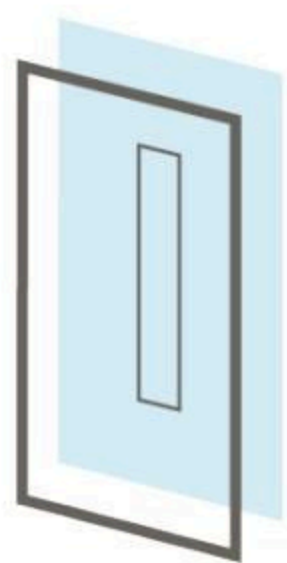
Create a pin board



- Living spaces
 - Colours
 - Styles
 - Textures
- Visit:
firstwindows.co.nz/inspiration-gallery
- Create online favourites account.

Step 3

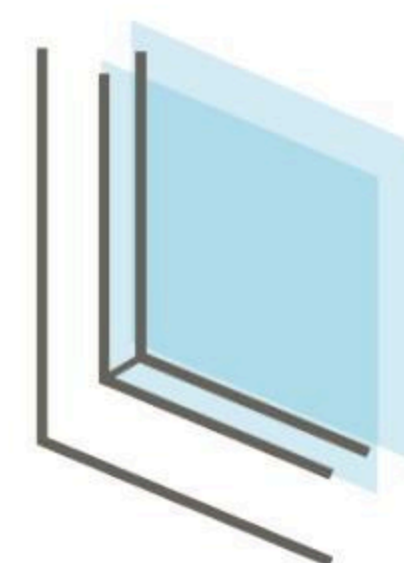
Products



- Look at our product ranges and decide what best suits your needs - consider thermally efficient products as well

Step 6

Glass



- Glass can enhance the way your home looks and feels, but it also adds to the warmth and thermal efficiency of your home
- Consider performance glass options to optimise the warmth and comfort of your home.

Step 4

Colours



- Consider the colour options that are available, how it ties in with the look of your home, and how it looks from the inside
- Look at the latest colour trends.

Step 7

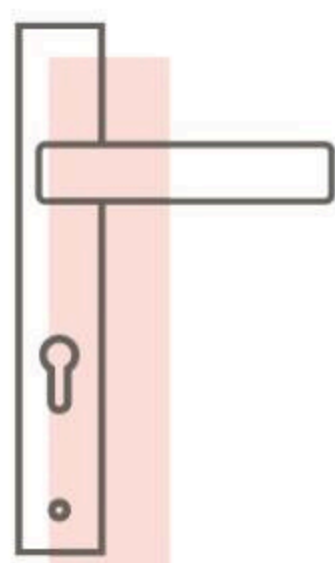
Ask the experts



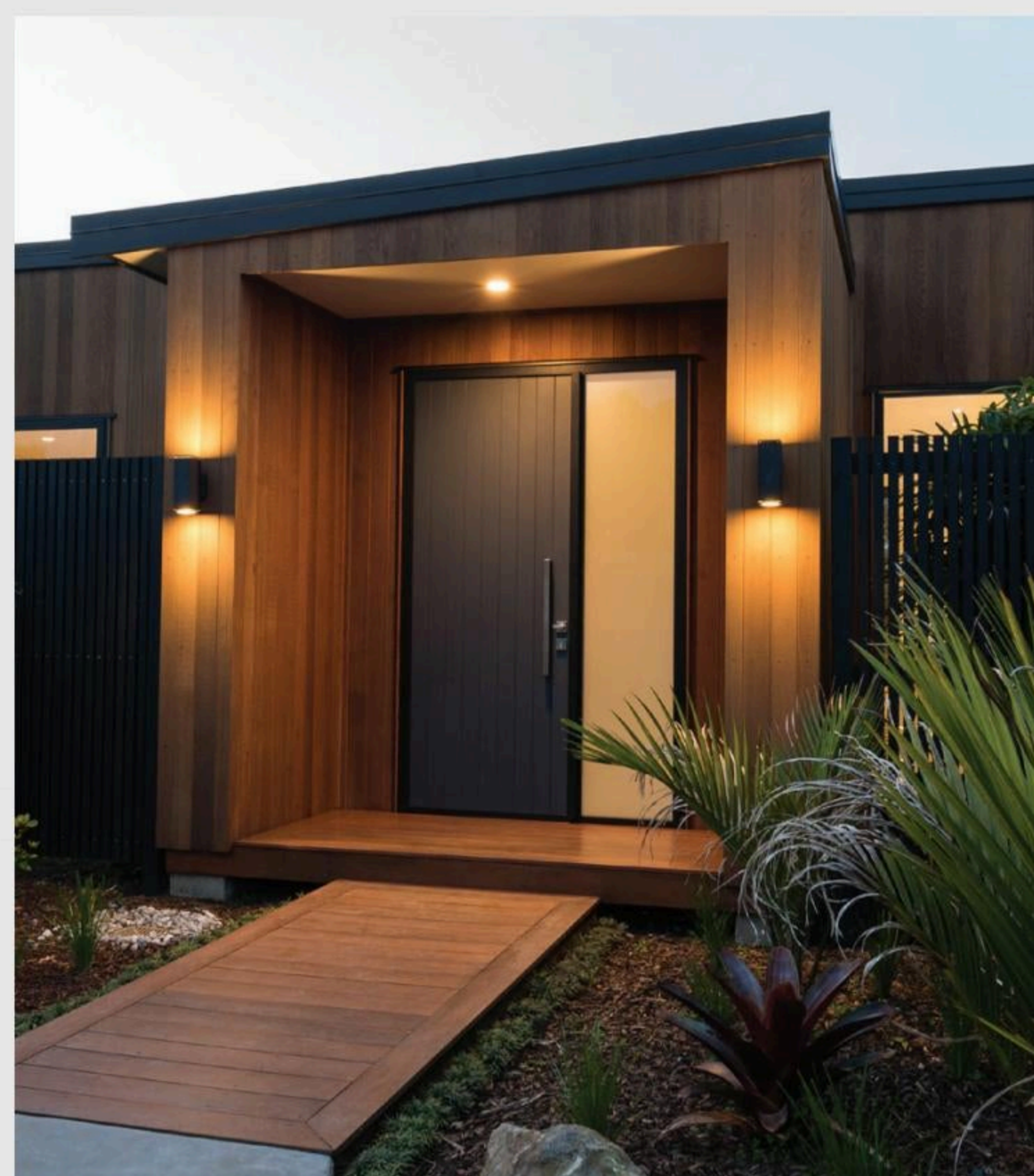
- Ask the experts about our products and surface finishes for the right advice
- See our website for handy tips so you can ask the right questions: firstwindows.co.nz/ask-an-expert
- Request a quote with an expert: firstwindows.co.nz/find-an-expert.

Step 5

Hardware



- Explore your hardware options – what kind of look do you want to achieve?
 - Blending in or making a statement?
 - Contemporary or classic look?



Which range suits my home?

First Windows & Doors offer a comprehensive range of products to complement any project. Find the perfect format for your home.

RESIDENTIAL SERIES

2.1m high doors

Versatile mainstream range at an economical price.

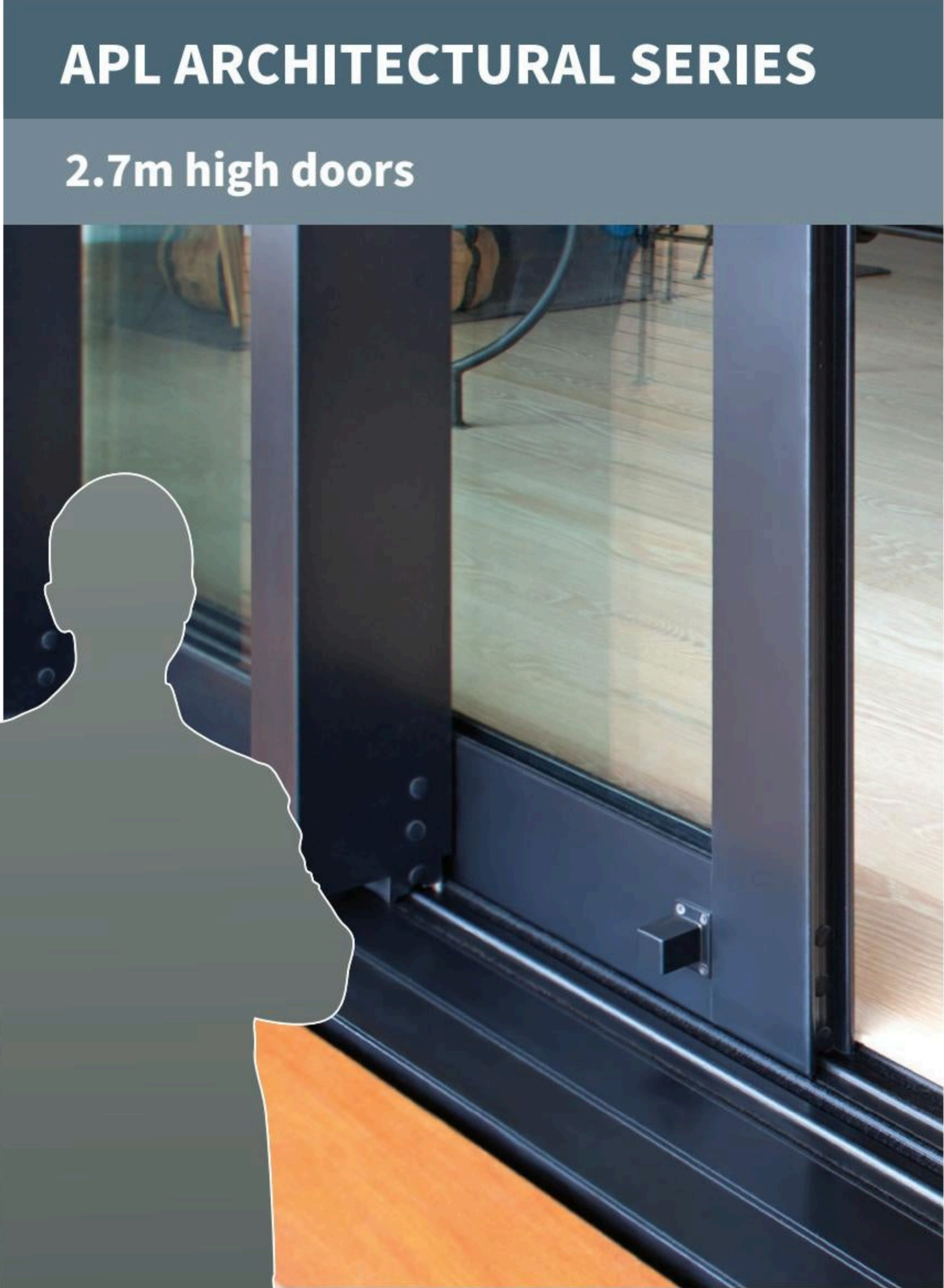
Available with ThermalHEART® to reduce hot and cold transfer.

Depending on wind zone and span requirements, other sizes are possible within each range. Contact your local manufacturer for further details.

Tip: Fixed or opening windows can be placed above these doors to increase the overall height of the unit.



Premier contemporary range for use in demanding environments. Available with ThermalHEART® to reduce hot and cold transfer.



High performance range with architecturally styled homes in mind.

Products

What window and door types are available in our product ranges?

We offer a wide variety of window and door formats to suit almost any application, and custom-designed windows and doors are also an option. Most of the formats are available across all of our product ranges.



Awning, casement and fixed windows



Hinged and French doors



Sliding windows



Sliding doors



Bi-fold windows



Bi-fold doors



Roof windows



Entrance doors

See the configurations page at the back of this brochure for further detail.



Residential ThermalHEART® Sliding doors and picture windows in Duratec Matt Ironsand



Residential Series

Clean, contemporary lines, smooth surfaces and generously sized profiles – that's the essence of Residential Series. It is our most economical, mainstream range of windows and doors.

Residential Series offers:

- A complete portfolio of window and door types, including custom-designed
- Expertly designed to cater for the majority of residential building projects
- Recommended door height of 2.1m, however doors can potentially be higher depending on site conditions
- Seamless transition using our flush sill sliding doors for the ultimate indoor-outdoor flow
- Scope to choose specialised features – e.g. passive ventilation (page 60)
- Available with ThermalHEART® to reduce hot and cold transfer (page 32).

Visit our website to see more inspirational images of First Windows & Doors - firstwindows.co.nz



Awning windows in Warm White Pearl



Picture window with timber louves and sliding window in Duratec Matt Black



Stacker sliding doors in Matt Black with Aria colour matched hardware and awning windows with automatic openers



Plasma entrance door with Yale 142 Pull Handle and Apex turn set, sliding doors and awning windows in Matt Black



Sliding window and glass louvres in Black anodised with Urbo Matt Black hardware



Awning window in Palladium Silver with Urbo colour matched hardware



Sliding window in Matt Black with Elemental Black anodised hardware



Awning window and picture window in Matt Lignite with Miro colour matched hardware



Awning windows and sliding window in Matt Black with Urbo colour matched hardware



Sliding door and sliding window in Duratec Matt Black with Urbo colour matched hardware



Stacker sliding window in Duratec Matt Black with Urbo colour matched hardware



A combination of products in Matt Titania with Aria colour matched hardware



Sliding door in Warm White Pearl showing a flush sill



Sliding door in Matt Black with Urbo colour matched hardware

Metro Series

Metro Series is all about clean lines and a contemporary look. It is a stylish and heavy-duty range, suitable for residential and architectural applications.

Metro Series offers:

- Clean, flat surfaces
- Large-sized formats capable of handling a wide range of weather conditions, engineered to stringent strength requirements
- Recommended door height of 2.4m, however doors can potentially be higher depending on site conditions
- Flush sills maintain the clean-line theme, and assist indoor-outdoor flow for sliding doors
- Specialised features available e.g. passive ventilation (page 60)
- Available with ThermalHEART® (page 32).

Visit our website to see more inspirational images of First Windows & Doors - firstwindows.co.nz



ThermalHEART® sliding door in Matt Black with Urbo colour matched hardware



Picture windows in Matt Black



Picture windows and timber louvres in Duratec Matt Black



Sliding doors, awning windows and picture windows in Matt Gravel with Urbo colour matched hardware



Over-the-wall sliding door in Light Bronze anodised with Urbo Matt Black hardware



Picture window in Matt Black



Over-the-wall sliding door in Matt Black with Urbo colour matched hardware



Stacker sliding door and grid of picture windows in Matt Black with Urbo colour matched hardware



ThermalHEART® sliding doors in Matt Black with Urbo colour matched hardware



Stacker sliding doors in Duratec Matt Black with Urbo colour matched hardware



Bi-fold doors in Black anodised with Urbo Matt Black hardware



Bi-fold doors and picture windows in Matt Black with Urbo colour matched hardware



Awning window in Matt Gravel with Urbo colour matched hardware



Over-the-wall sliding window, door and awning windows in Matt Metropolis Electric Cow with Urbo colour matched hardware

APL Architectural Series

Targeted at architectural homes and apartments, APL Architectural Series of high-performance windows and doors are meticulously designed.

APL Architectural Series offers:

- Large formats suitable for most weather and environmental conditions
- Square-edged shape and flush surfaces
- Assured strength and versatility
- Recommended door height of 2.7m, however doors can potentially be higher depending on site conditions
- Flush sills and easy-glide panels available for sliding doors
- Specialised features available e.g. passive ventilation (page 60)

Visit our website to see more inspirational images of First Windows & Doors - firstwindows.co.nz



Awning window in Black anodised with Urbo Matt Black hardware



Sliding doors in Matt Black with Urbo colour matched hardware

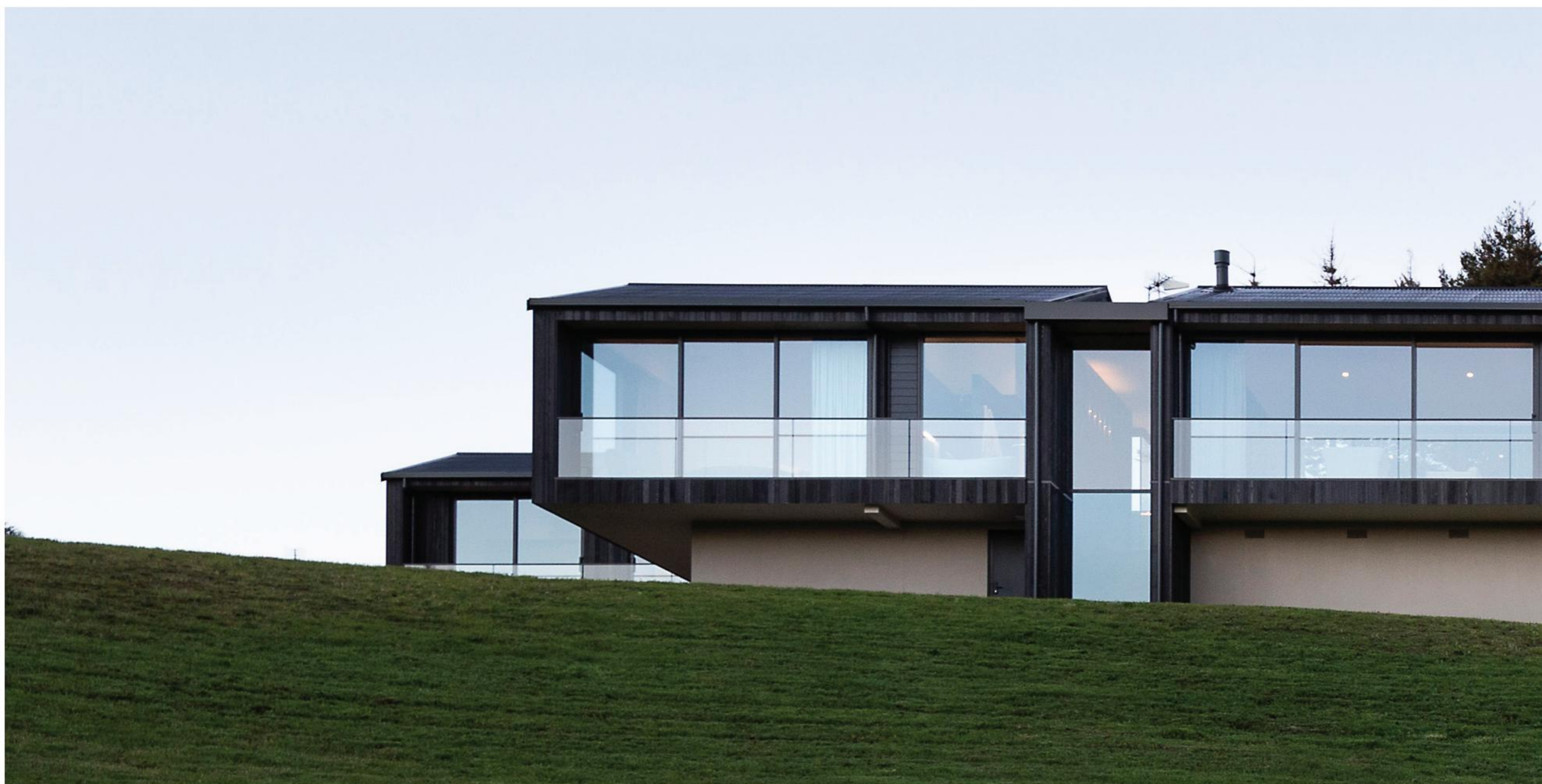


Stacker sliding doors, bi-fold windows and glass louvres in Metropolis Coal Dust with Urbo colour matched hardware



Stacker sliding door in Matt Black with Urbo colour matched hardware





A combination of products in Matt Black with Urbo colour matched hardware



Casement windows in Black anodised with Icon stainless steel hardware



Stacker sliding doors in Matt Black with Elemental black anodised hardware



French doors in Silver anodised with Icon stainless steel hardware



Stacker sliding doors in Matt Black with Urbo colour matched hardware



Awning windows and stacker sliding doors in Silver anodised with Icon stainless steel hardware

ThermalHEART®

Double-glazing is standard these days. But our innovative ThermalHEART® technology takes the fight against winter cold a step further with an additional thermal insulator stitched into the core of our aluminium window system.

Why choose ThermalHEART®?

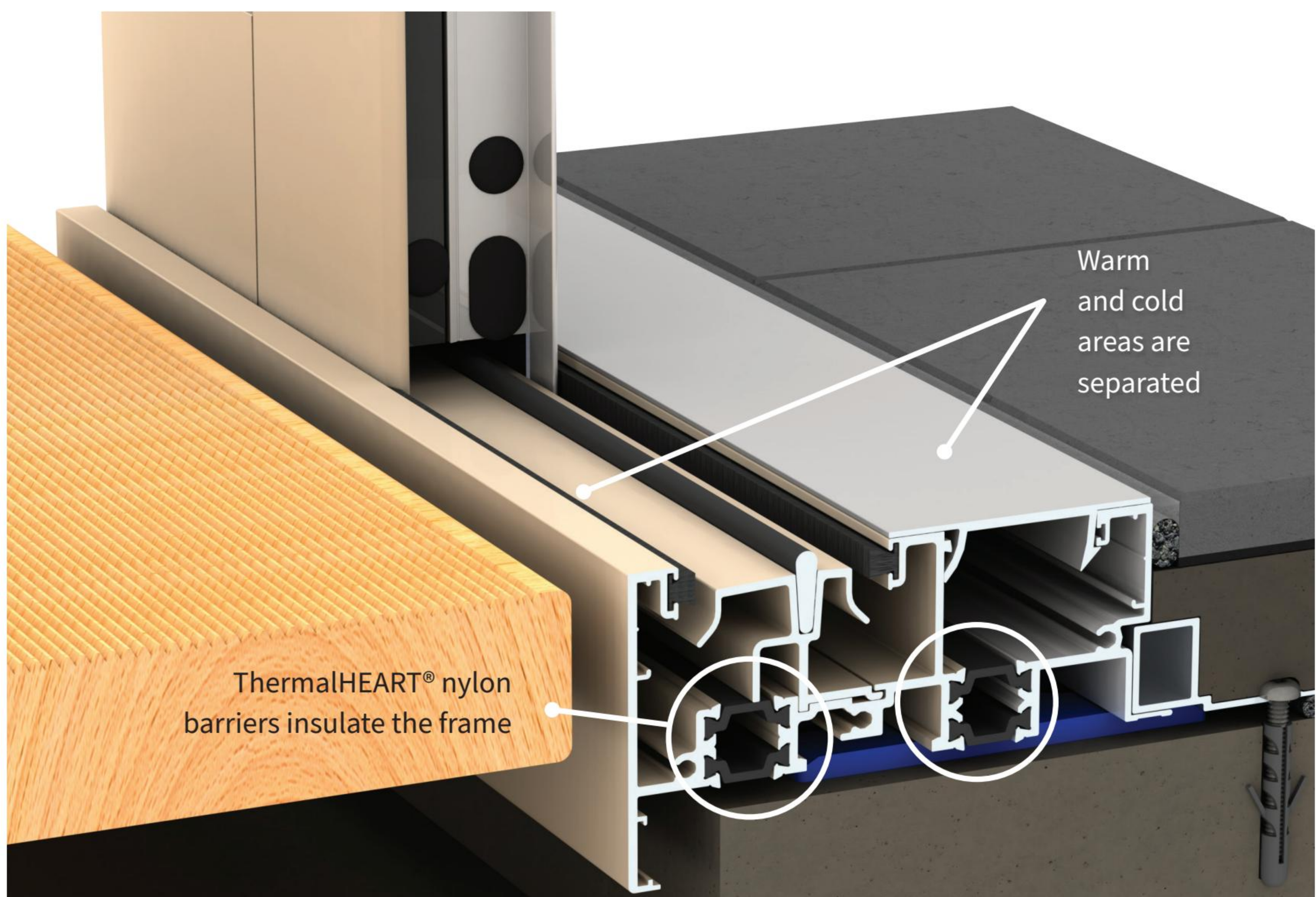
Comfort: Choosing windows and doors that increase your family's wellbeing makes perfect sense.

Warmth: Keeping cool temperatures out in colder months, and decreasing solar gain in warmer months assists in year-round warmth and comfort.

Health: ThermalHEART® can aid in managing the risk of condensation forming, therefore reducing the risk of mould growth.

ThermalHEART® offers:

- Thermal performance up to 35% better than standard double glazed windows
- A full range of window and door options are available
- Recommended door height of 2.1m for Residential Series and 2.4m for Metro Series however doors can potentially be higher depending on site conditions
- Dual colour is available within the Metro Series range – different colours on the interior and exterior
- Doors with a thermal break built into them may experience slight temporary bowing due to the difference in temperature between the inside and outside of the door, especially when exposed to direct sunlight.





Energy Rating Systems



For many New Zealanders, energy efficiency is top of mind, and increasingly a factor when it comes to making purchasing decisions. The same concern applies to windows and doors, given the impact that glazing can have on the comfort levels of your home. WEERS allocates between one and six stars to a job lot of windows and doors. This system has been adopted by the Window and Glass Association of New Zealand and uses its own star logo.

The more stars, the better the thermal efficiency. Look for the WEERS rating on your window quote or in a separate report from your local manufacturer.

- Allows consumers to see the precise rating for a job lot of windows and doors
- Endorsed by the Window and Glass Association of New Zealand.



Residential Series ThermalHEART® picture windows

Klima Series

If thermal efficiency is among your top priorities, Klima Series is the smart bet.

It may not yet be as familiar as aluminium, but uPVC joinery is set to become a popular option for Kiwi homeowners. How could it not?

Designed and manufactured here in New Zealand to suit our uniquely challenging climate, durable Klima Series windows and doors deliver warmth and comfort all year-round and are unbeatable for thermal efficiency.

Benefits of Klima Series include:

■ Thermal efficiency

A thermally efficient home can be up to \$900* cheaper to warm every year compared to one built to code, as well as being more comfortable to live in and better for the environment. Clever house design is a key contributor, but you also need great products. Klima Series is perfect for the New Zealand climate, achieving a maximum 6 energy stars under WEERS (Window Energy Efficiency Rating) when used with high-performance glazing.

■ Healthier homes

Too many of our houses aren't healthy homes. Klima Series represents an affordable investment to create a home that is healthier and more comfortable 365 days of the year.

■ Noise reduction

Excessive noise in a home can raise stress levels, affect concentration and sleep and generally undermine wellbeing. Klima Series not only keeps your home toasty, it offers excellent noise reduction.

■ Durability

Put to the ultimate test under a desert sun, Klima Series came through with flying colours, showing no signs of degrading or discolouring thanks to the highly durable nature of uPVC.

*A thermally efficient 8 star Green Star house can be up to \$900 cheaper to warm than a house built to code. Source: NZGBC.

**See our Klima Series brochure
for further information**
firstwindows.co.nz/klima-series



Awning windows with espagnolette fastener



AluClip system

Klima Series products are available in white, but can also be supplied in other colours using the AluClip system.

It is a powdercoated aluminium facing clipped on to the exterior frame. As a result, your exterior colour choice becomes virtually unlimited.





Awning windows, french doors and casement window

Smartwood

The best of both worlds: Smartwood composite windows and doors combine the natural glow of wood on the inside with the durability of aluminium outside.

Features include:

- Thermal efficiency: good thermal properties, helped by internal timber facings
- A wide range of timber options including cedar, jarrah, kwila, American white oak, and others
- Comprehensive range of windows and doors, plus a host of enhancements.

Recommended door height of 2.4m in very high wind zones.



Casement windows in cedar and Matt Black with client supplied hardware



Casement windows in cedar with Miro Matt Silver hardware



2+2 Bi-fold window in cedar and Matt Black with Miro Matt Silver hardware



Sliding door in cedar with client supplied hardware

Picture windows

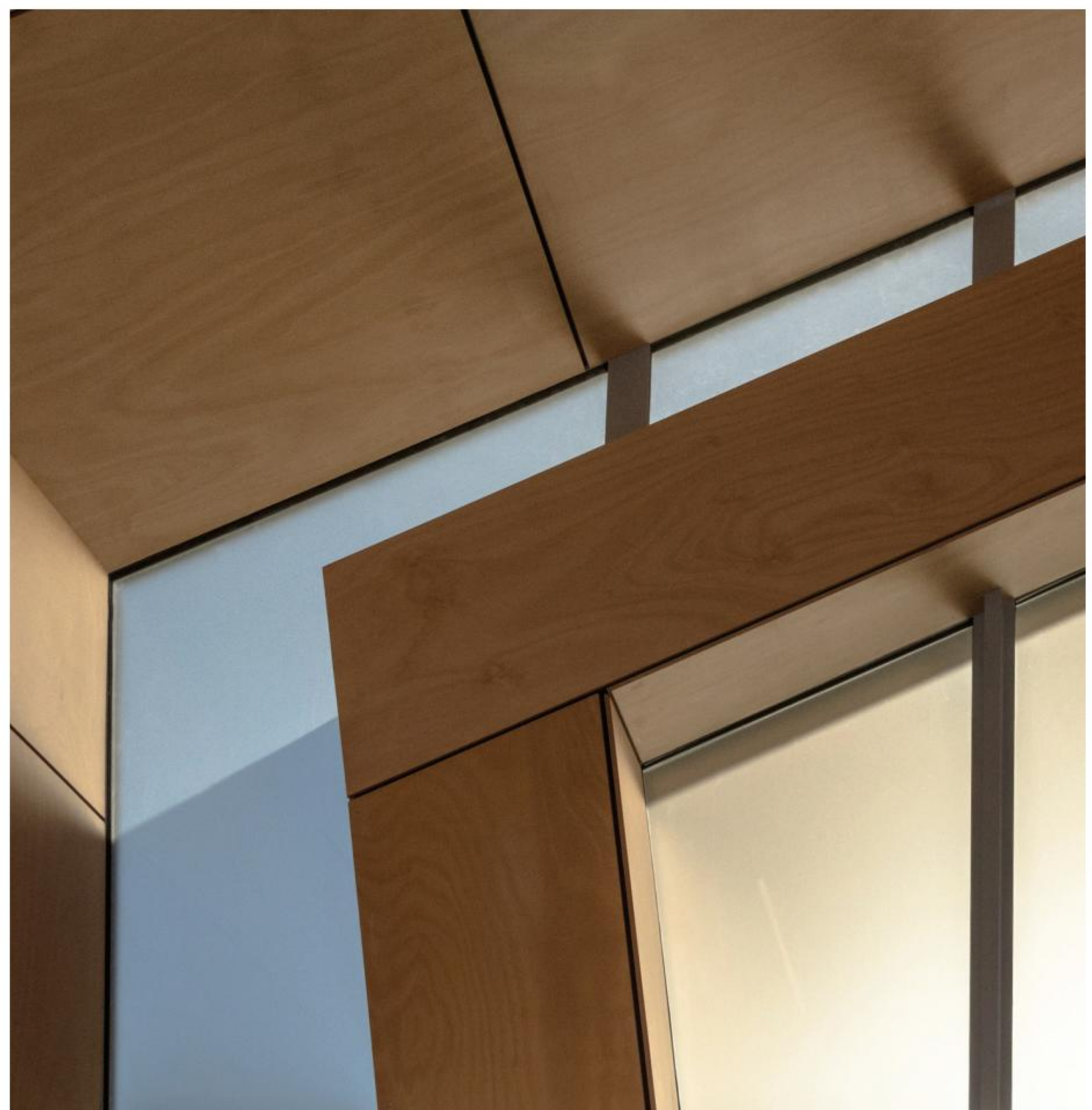
Tailored to suit your preference. A wide range of shapes, sizes and configurations are possible, from curved tops, to angular windows and louvres.



Electronically controlled awning windows in Silver anodised



Aluminium louvres in Matt Black



Picture windows in Silver Pearl



Picture windows in Silver anodised

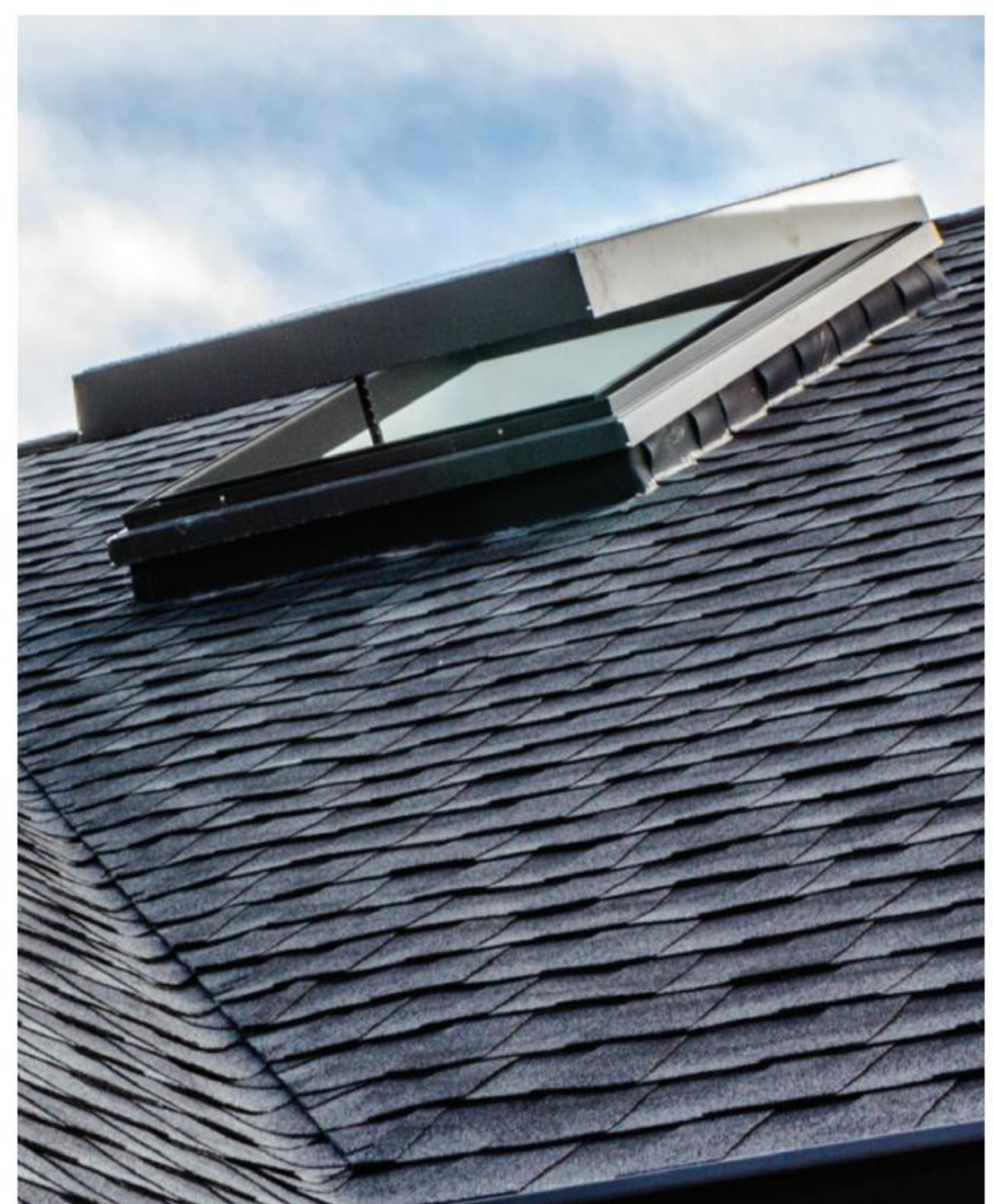
Roof windows

Designed to be thermally efficient, First roof windows include a thermal break, and incorporate AGP's industry-leading glass technology with a Solux-E® low-E coating.

- Roof windows can be customised, and are available in dual colour to match the interior and roof colours
- Its flush edges means no ponding of water allows window to be installed to low roof pitches
- An auto rain-sensor feature can activate closing
- Can be fixed, or hinge-opening with control by manual winder, toggle switch to open and close electronically, or with remote touchpad with four open/close options.



Electronically opening roof window and awning window in Matt Black with Urbo colour matched hardware



Opening roof window in Matt Ironsand



Manual winder roof window in Matt Ironsand



Fixed roof windows in Matt Black



Entrance doors

A good entrance door is the
defining feature of your home

Note – Configurations are subject to change. Also, dark colours may not be suitable for doors that are exposed to prolonged direct sunlight. Consult your local manufacturer for further advice.

See our Entrance Door brochure for more information



Plasma entrance door in Jalapeno Red with Apex turn set and client supplied pull handle



Latitude

Tongue and groove planks, in either a vertical or horizontal version with a sturdy frame around the door panel.



LAT00



LAT03



LAT101



Plasma

Flush, flat surface with different options available, including horizontal negative detail lines. Slimline Plasma, an economical version with fewer options, is also available.



PLA00



PLA01



PLA03

* Configurations are available in a range of options. Consult your First manufacturer for further information.



Axis

Tongue and groove planks arranged vertically with no frame around the door panel.



AX01



AX02



AX03



Classic

Designed with rectangular patterns in either scrolled or contemporary edgings for a traditional look.



CLA00



CLA06



CLA4109



Aquila

A combination of horizontally stacked tongue and groove boards, with a chunky modern frame.



AQ00



AQ03



AQ06



Glass Plasma

Clad in 5mm toughened glass sheets with a minimal aluminium edge.



GPL00 - GL



GPL00 - GL



GPL00 - GL

* Configurations are available in a range of options. Consult your First manufacturer for further information.

Lindo

Highly personalised design using a custom plank system.



Finishes

You can never have too many options, which is why we offer a comprehensive range of colours and finishings.

Mannex

A low sheen surface finish highly resistant to marking and scuffing – specifically for use on entrance doors. There are a wide variety of colours available. Please ask your manufacturer for a colour brochure to see our full range of Mannex powdercoat options.

Please note that the finish of the Mannex powdercoating will look slightly different to the powdercoating on your aluminium joinery.

Intensity

There are six bold, bright colours in this Dulux Duratec range, ensuring excellent colour retention and exceptional durability.

Fading and bowing

Dark colours may not be suitable for doors that are exposed to prolonged direct sunlight as this may cause the colour to fade, so careful consideration needs to be made when choosing your entrance door colour/s.

Doors with a thermal break built into them may experience slight temporary bowing due to the difference in temperature between the inside and outside of the door, especially when exposed to direct sunlight. We stress that this is only a temporary effect and the door will revert back to its normal shape as the aluminium cools. This may occur primarily with dark colours, so can be minimised by selecting lighter external colours or increasing cover over the door area.

See our Entrance Door brochure for further information:
or visit our website firstwindows.co.nz/entrance-doors



Hardware

APL Architectural Series sliding door with Icon stainless steel hardware



Urbo

Urbo is all about fine lines, clean shapes and a combination of square and radiused edges, delivering a lighter look without compromising on strength.

Lever door handle

Offers multi-point locking, and when the handle is lifted upwards it activates locking rods at the top and bottom of the door for added security.

Small - 120mm x 22mm with a base plate of 212mm h x 32mm w
Large - 150mm x 30mm with a base plate of 292mm h x 44mm w

Pull handle

Lock is fixed separately to the door, and is activated by a key or interior turn knob. A four-point locking system is available.

Small - 255mm h
Large - 323mm h

Surface mount sliding door handle

An all-in-one handle and lock for sliding doors or windows. Snib or keyway installed in the body of the handle.

180mm h x 95mm w

Self-latching sliding door lock

The self-latching sliding door lock can latch doors easily, especially where two panels meet in a bi-parting slider configuration.

90mm h x 28mm w with a base plate of 56mm h x 22mm w



Bi-fold handle

This swivel operator activates locking rods in the top and bottom of the door or window panel.

220mm h x 25mm w

Flush pull

The flush pull is ideal for lighter sliding panels where a robust hand grip is not required.

220mm h x 44mm w

Window fastener

Closes against the window frame with no visible flap or wedge. Also available in a low profile option.

110mm w x 33mm d

Venting window fastener

A venting option of the window fastener is available which allows the window to be fastened in a partially open position for passive ventilation.

110mm w x 33mm d

Architectural window fastener

The window fastener with separately fixed wedge is suitable for the APL Architectural Series.

110mm w x 40mm d



Miro

The Miro range of die-cast handles is a contemporary classic, characterised by elegant, ergonomic curves.

Lever door handle

Offers multi-point locking, and when the handle is lifted upwards it activates locking rods at the top and bottom of the door for added security.

*Handle length - 117mm
Baseplate - 210mm*

Pull handle

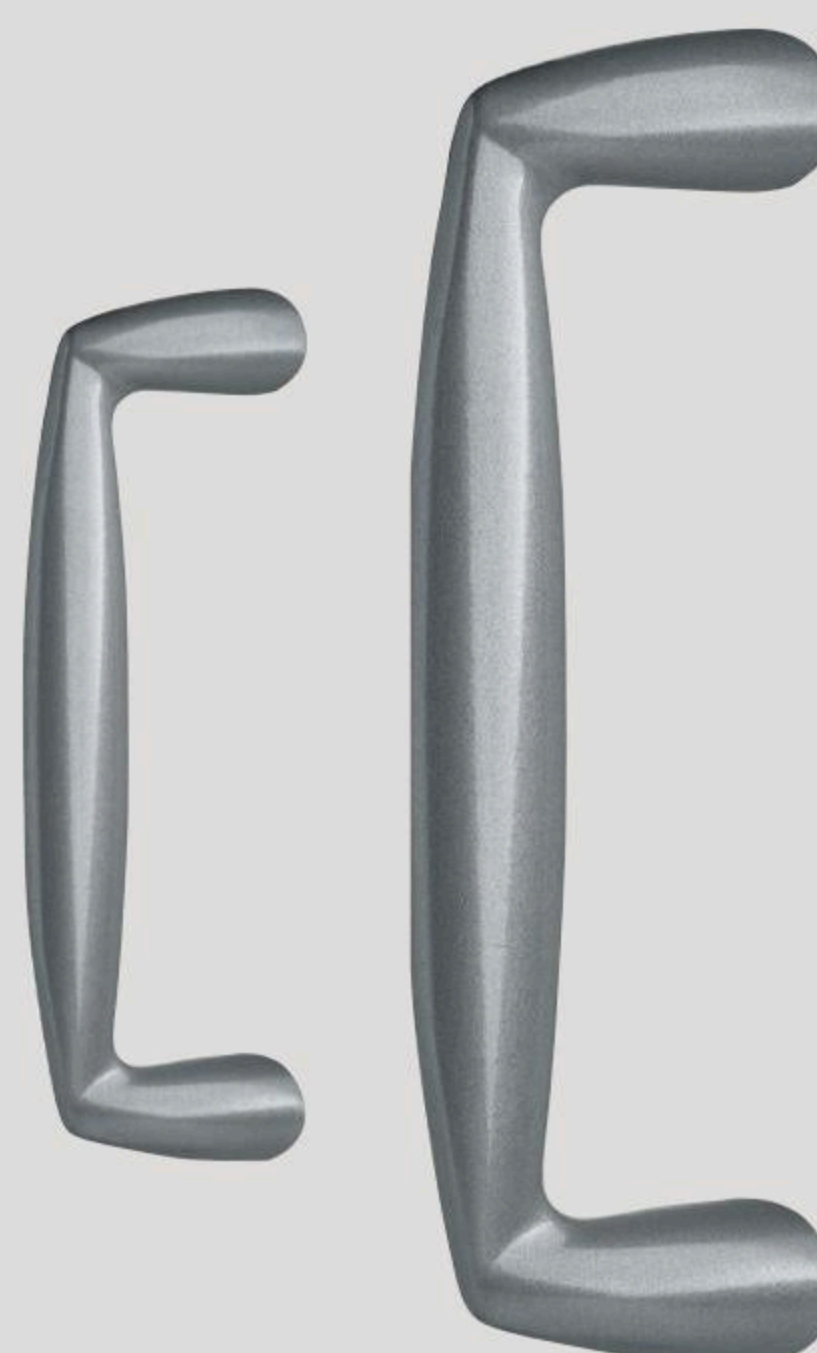
Lock is fixed separately to the door, and is activated by a key or interior turn knob. A multi-point locking system is available.

*Small - 166mm h
Large - 240mm h*

Surface mount sliding door handle

This all-in-one handle and lock for sliding doors or windows has no separately installed snib or keyway.

175mm h x 54mm d



Bi-fold handle

This swivel operator activates locking rods in the top and bottom of the door or window panel.

153mm h x 24mm w

Window fastener

Combines a sure hand grip with clean lines. Available in a low profile option.

100mm h x 39mm d

Venting window fastener

A venting option of the window fastener is available which allows the window to be fastened in a partially open position for passive ventilation.

100mm w x 39mm d

Architectural window fastener

This window fastener has a separately fixed wedge, and is suitable for the APL Architectural Series and Smartwood.

100mm w x 48mm d



Icon

New Zealand’s first fully integrated range of 316 grade stainless steel hardware for aluminium windows and doors.

Lever door handle

Offers multi-point locking, and when the handle is lifted upwards it activates locking rods at the top and bottom of the door for added security.

*Small - 110mm x 21mm with a base plate of 210mm h x 30mm w
Large - 150mm x 30mm with a base plate of 290mm h x 45mm w*

Pull handle

Lock is fixed separately to the door, and is activated by a key or interior turn knob. A multi-point locking system is available.

*Small - 325mm
Medium - 630mm
Large - 930mm
Extra Large - 1230mm or 1820mm*

Bi-fold handle

Lock is fixed separately to the door, and is activated by a key or interior turn knob. A multi-point locking system is available.

170mm h x 25mm w



Sliding door flush pull

The flush pull is ideal for lighter sliding panels where a robust hand grip is not required.

230mm h x 43mm w

Window fastener

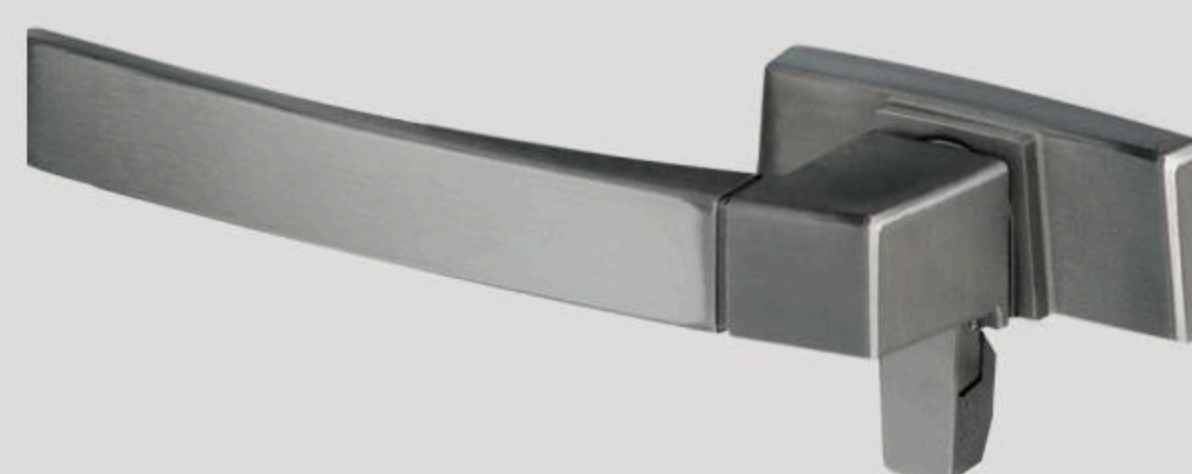
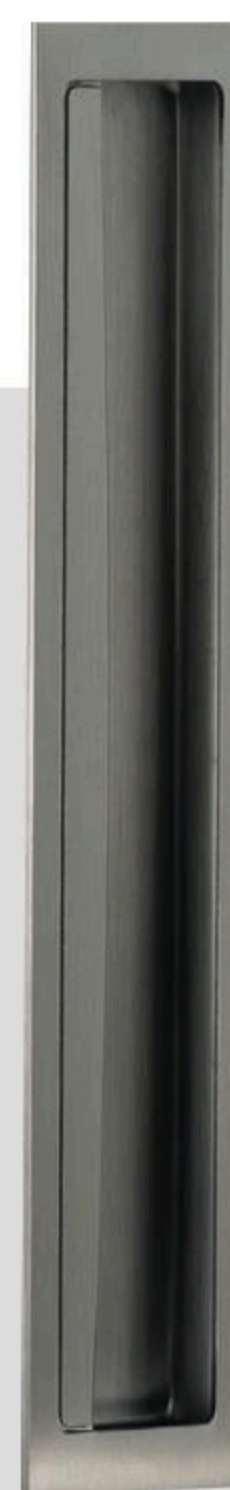
This fastener for Residential Series awning and casement windows blends square-edged and radiused looks. Closes against the window frame with no visible flap or wedge. Also available in a low profile option.

110mm w x 31mm d

Architectural window fastener

The Icon window fastener with separately fixed wedge is designed for high specification window systems - including APL Architectural Series.

110mm w x 36mm d



Elemental

As its name implies, the Elemental hardware range strives for simplicity. Elemental is a unique range of hardware that is made from extruded aluminium.

Available in anodised colours: Silver, Black, Champagne, Light Bronze, Medium Bronze, Dark Bronze.

Lever door handle

Offers multi-point locking, and when the handle is lifted upwards it activates locking rods at the top and bottom of the door for added security.

*Small - 125mm x 22mm with a base plate of 212mm h x 32mm w
Large - 140mm x 30mm with a base plate of 292mm h x 44mm w*

Pull handle

Available in two sizes - large or small, but can be made to any length by special order. Lock is fixed separately to the door, and is activated by a key or interior turn knob. A multi-point locking system is available.

*Small - 250mm h
Large - 325mm h*

Bi-fold handle

Lock is fixed separately to the door, and is activated by a key or interior turn knob. A multi-point locking system is available.

170mm h x 25mm w



Self-latching sliding door lock

The self-latching sliding door lock can latch doors easily, especially where two panels meet in a bi-parting slider configuration.

75mm h x 25mm w with a base plate of 55mm h x 30mm w

Flush pull

The flush pull is ideal for lighter sliding panels where a robust hand grip is not required.

269mm h x 44mm w

Espagnolette window fastener

Single hand, robust operation drives a two-point latch mechanism in the window which includes a secure venting position.

110mm w x 37mm d

Window fastener

Closes against the window frame with no visible flap or wedge. Also available in a low profile option.

110mm w x 35mm d

Venting window fastener

A venting option of the window fastener is available which allows the window to be fastened in a partially open position for passive ventilation.

110mm w x 35mm d



Surface finishes

Powdercoating

You can never have too many options when it comes to choosing a colour for joinery – which explains why powdercoating is such a popular surface finish for Kiwi homeowners.

No other treatment offers such a diverse palette. And when it comes to First, colour is just one of the alternatives to mull over. Matt finishes, for example, have been introduced as an alternative to satin for the popular colours, offering a more consistent look.

And there's also a textured finish that creates a low sheen surface highly resistant to marking and scuffing – perfect for entrance doors. For the majority of residential developments, the highly popular Duralloy powder grade will be more than adequate. Please see our Care and Maintenance brochure).

Finally: when you are choosing your aluminium joinery colours, always assess aluminium swatches in natural light.

See our Popular Colour brochure for further information



Entrance door in Mannex New Denim Blue with Silver anodised external frame and a Yale145 pull handle

Anodising

Anodised finishing is a highly popular choice for architectural projects, and with good reason: that glowing matt sheen looks terrific on aluminium.

As for colours and film thicknesses, there are plenty of options: Silver, in 12 and 25 microns. Bronze in light, medium or dark, 12 and 25 microns. Black, 25 microns only. Champagne, in 25 microns only.

For properties in coastal, industrial or other corrosive environments, 25 microns is recommended, and may even be required to qualify for a warranty. (Note: the anodised coating has a 10-year warranty for 12 micron anodising, and 20-years for 25 microns).



* Colours shown give only an indication of colour. Please contact your local manufacturer for an accurate aluminium colour sample



APL Architectural Series products in Black anodised with Icon stainless steel hardware

Passive ventilation

First have a range of passive ventilation options available – from the straightforward Sashvent and Aerovent systems to the sophisticated Ventient system.

Benefits of Passive Ventilation:

- Introduces fresh air into the building interior
- Makes homes healthier by improving air quality
- Easier and more efficient to heat, reducing energy consumption.



Sashvent

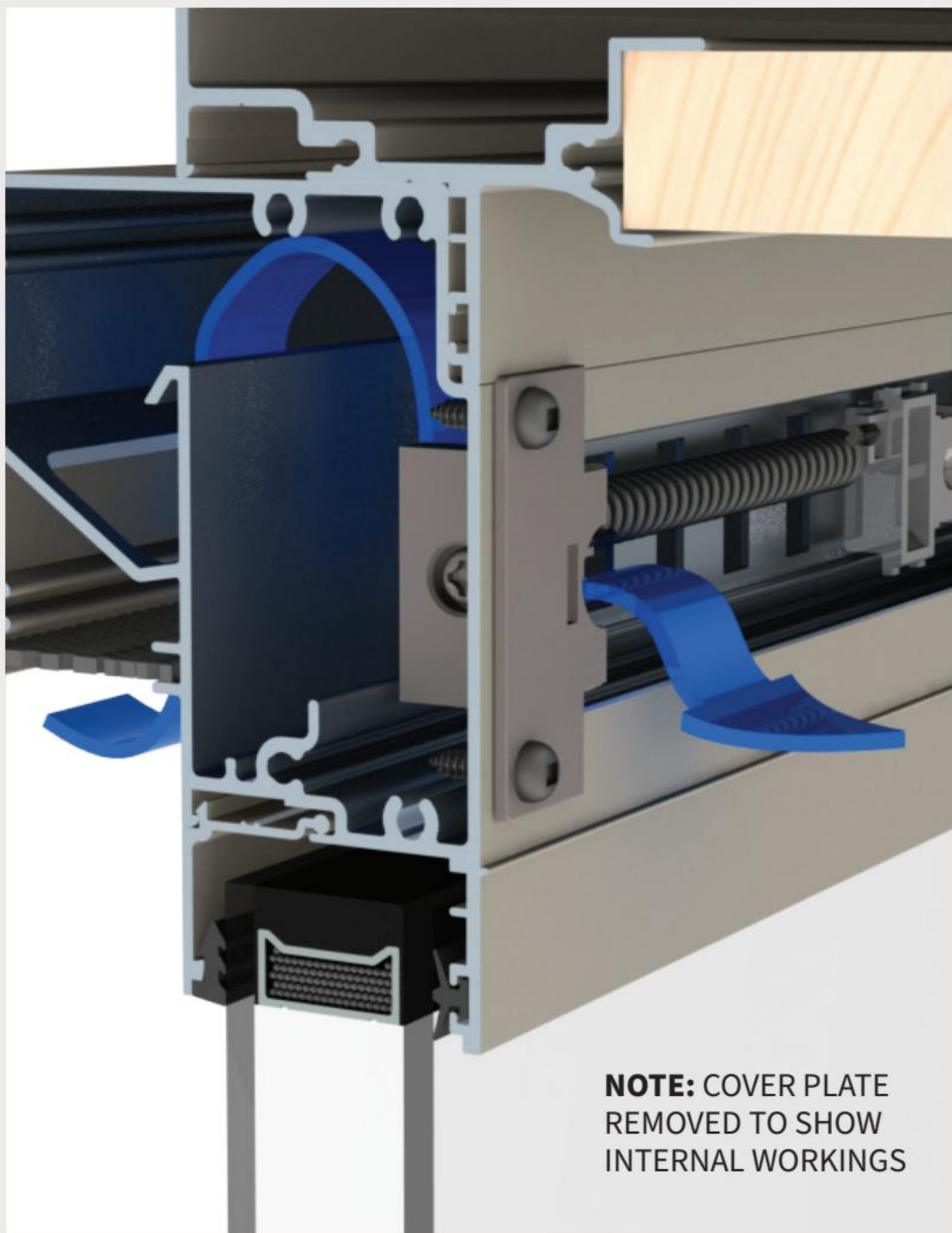
An effective background ventilation system through the bottom of an opening window.

- Installed into bottom opening windows (awning) meaning it is hidden away
- A manual slide allows the vent to be opened and closed
- Insect mesh barrier ensures only fresh air is allowed in.

Aerovent

Improved airflow with less visual intrusion.

- A cover on the inside also acts as a manual slide for opening and closing
- Air movement is directed upwards to prevent draughts
- Internal insect mesh barrier ensures only fresh air is allowed in
- Ideal for cross-ventilation and air flow.



Ventient

Naturally automated trickle ventilator suitable for high-end residential and commercial projects.

- Opens and closes based upon air temperature. This ventilation option is fully automated without the use of power, sensors or human intervention
- Installed in Metro Series or APL Architectural Series windows or doors
- Mesh prevents insect entry to the aluminium Ventient box, and dust and pollen filters are also incorporated.



Glass options

Glazing choices are an important option to consider. Glass can enhance the way your home looks and feels, but it also adds to the warmth and thermal efficiency of your home.

It's a good idea to work through your options to find the right glass for your home. With options to reduce UV, minimise heat loss, and increase year-round comfort, your decisions can have a significant impact on the performance of your glazing.

Some factors to consider and discuss with your manufacturer are the orientation and shading of your home, the climate and noise around where you live.

There are a variety of performance glass options to suit most requirements. Here is a quick overview of the most popular options to consider.

Double glazing

Double glazing offers year-round thermal advantages. Benefits include significant reduction in UV light and good retention of internal heat. As a bonus, it also dampens sound.

Low-E

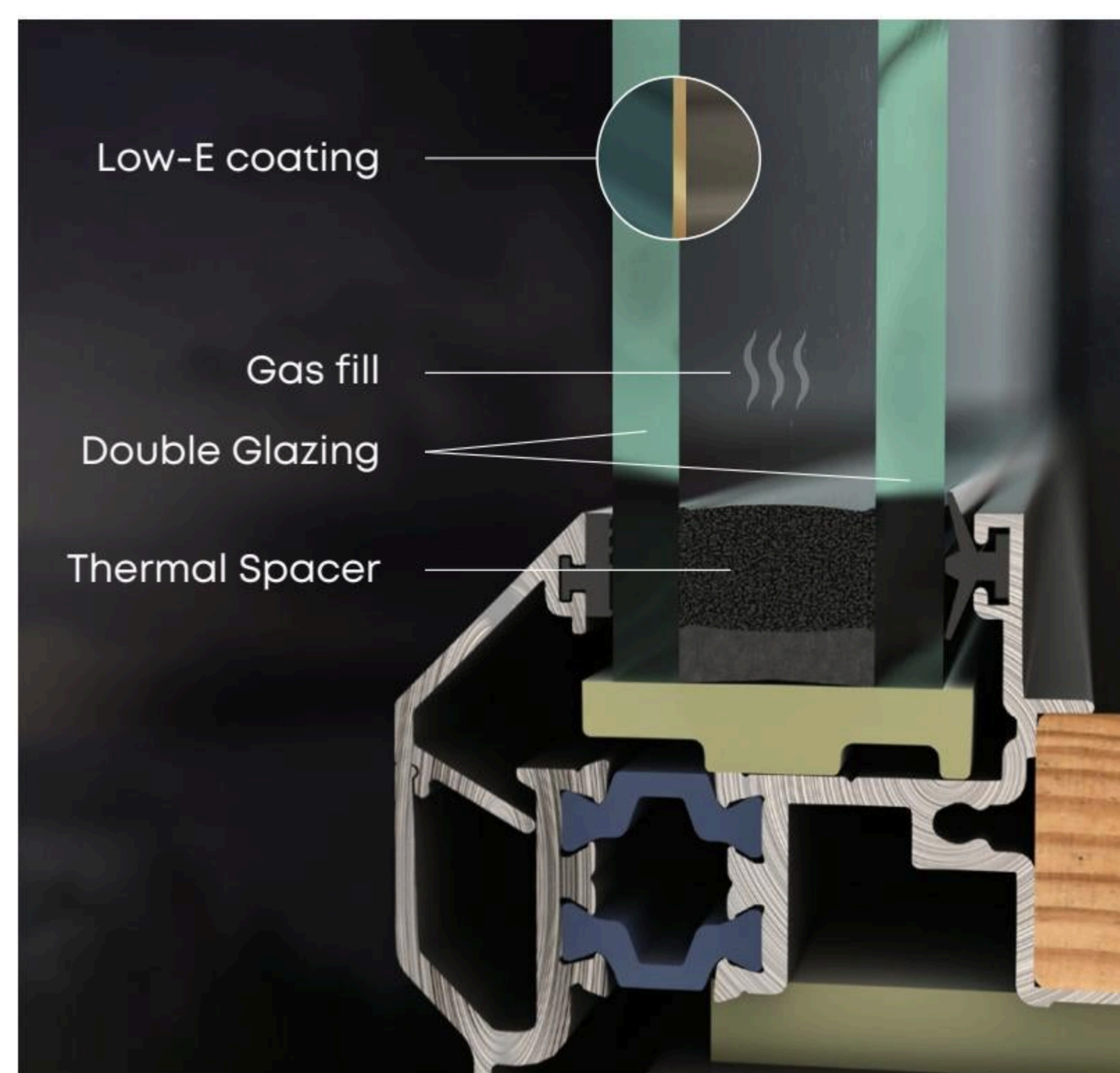
Low-E (the 'e' stands for emissivity) glass is a virtually invisible coating incorporated into your double glazing, improving the level of insulation in your home. The Low-E coating is applied to the inside surface of the exterior glass pane, protecting it from the elements.

Thermal spacers

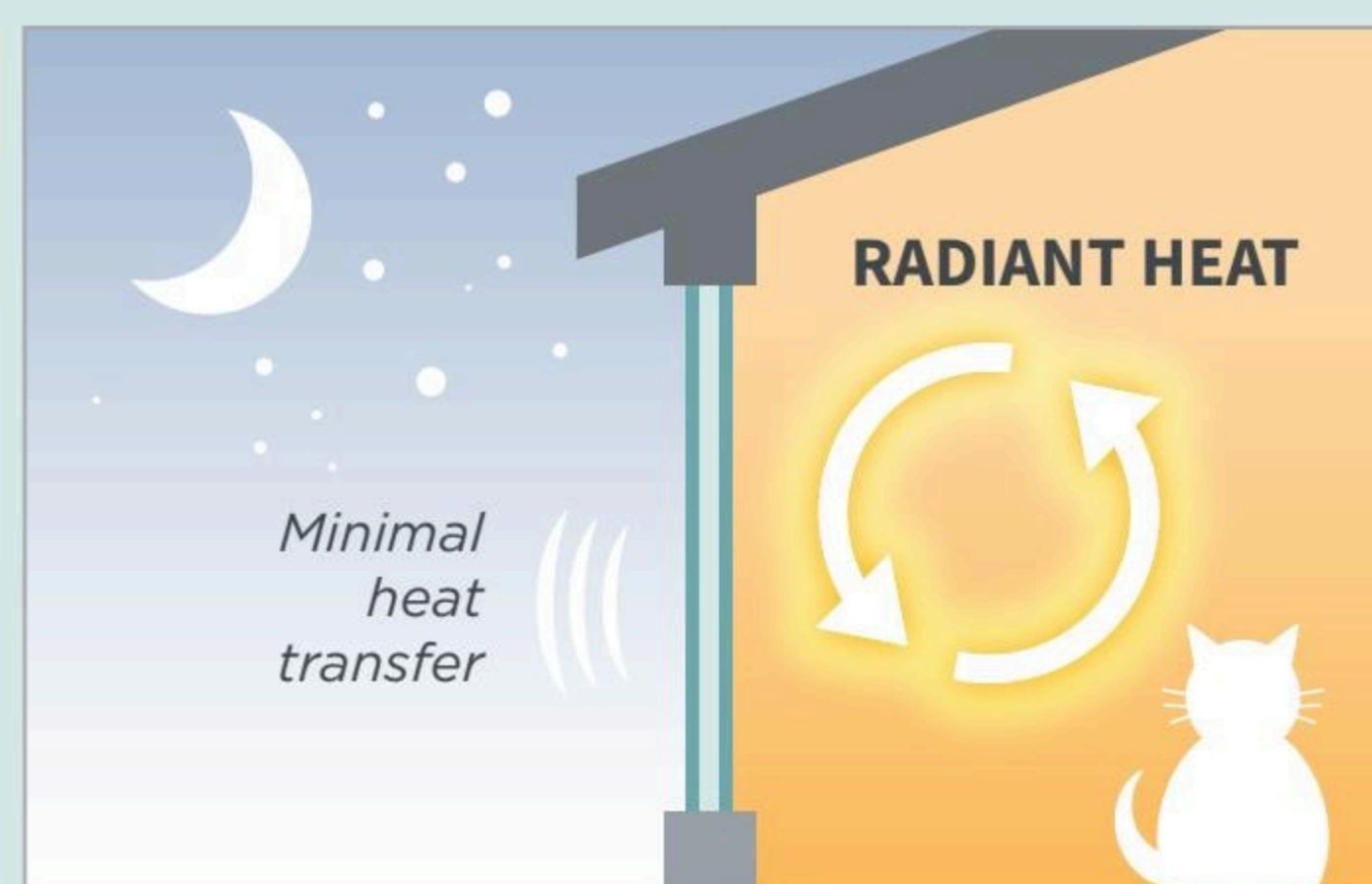
A thermal spacer reduces heat transfer through the glass edge and improves the seal that is key to genuine double-glazing. A thermal spacer holds the two glass panes of your double-glazed windows and doors apart and creates a seal to hold in the gas fill. This keeps warm and cold areas separated, reducing heat loss around the outside of your glazing.

Gas fill

Inert gases such as argon and krypton can be used as an insulator in double glazing to create an additional barrier to heat loss and heat absorption, improving thermal performance. The efficiency of a gas fill is enhanced when paired with a thermal spacer.



What does Low-E do?

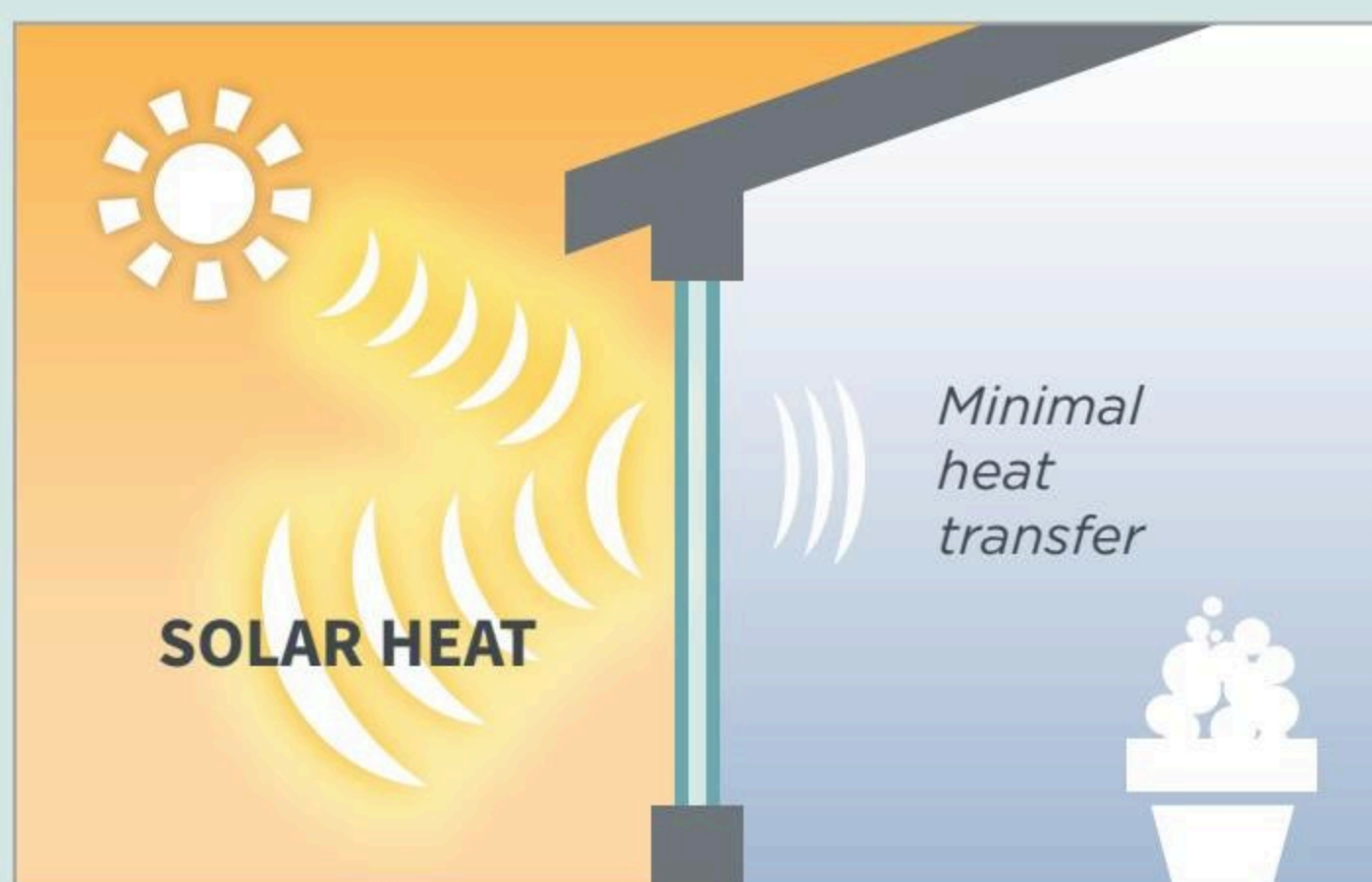


Retains heat

Low-E reflects the warm air in the home back into the house rather than escaping through the glass. This reduces the energy needed to keep the home warm in cooler months.

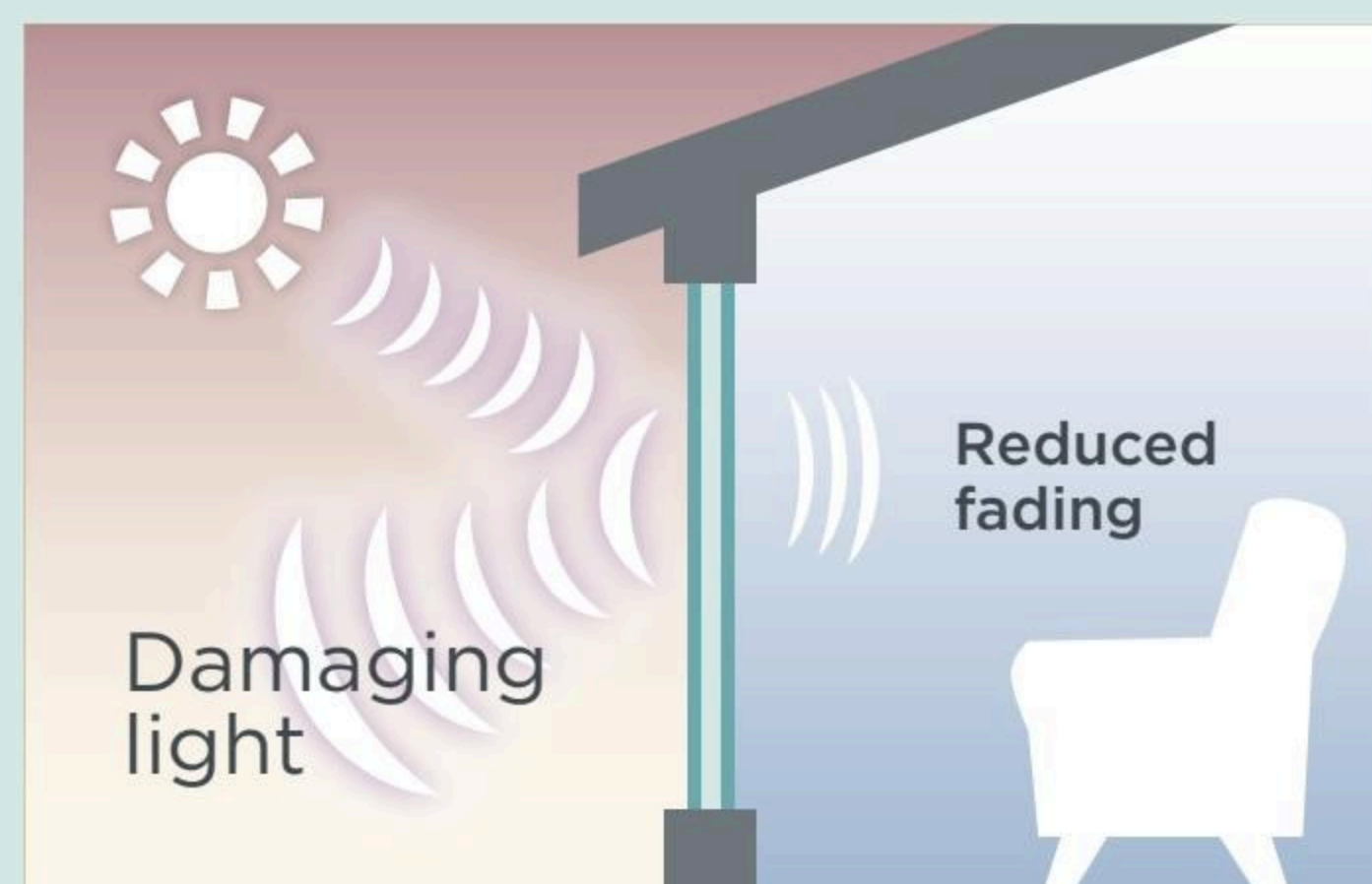


Metro Series stacker sliding doors in Matt Black with Urbo colour matched hardware



Blocks excessive heat

Low-E lets the sun's visible light pass through but reflects the 'sunheat' back out again. With less heat entering your home, there's less need for air-conditioning to keep it cool.



Reduces fading

Low-E helps protect furnishings in the home from fading by reducing the amount of UV light that enters through the glass.

Please contact your local manufacturer for further advice and information.



Customer Stories





Circling back

Behold a beach house with a childhood connection that makes a curve in exactly the right place.

Visit firstwindows.co.nz/circling-back to watch the video and listen to the podcast



Metro Series bi-parting sliding doors in Duratec Matt Black with Black anodised Elemental hardware

Tom Bowden's holiday home is at one with the landscape. In a natural amphitheatre on a coastal site near Northland's Matapouri, the building is shrouded in understated charcoal-stained cedar below a shingle roof, allowing it to visually blend into the surrounding bush. There is one distinct feature that sets it apart, though: the floorplan is a semicircle.

Fond memories of a childhood spent playing with his five siblings on the family farm here formed Tom's decision to build a bach in the same place. "The commitment was made a long time ago, but like many things, the execution was the difficult part," he says. "It's taken 30 years to get around to building, because we subdivided the land to create a plot for each of the siblings, along with a few others with an interest in conservation, to help raise funds to regenerate the native bush, and we've left 92% of it as QEII – covenanted land and bush."

After having some initial sketches drawn up that didn't quite fit with his hopes and dreams for this special spot, Tom turned to architect Belinda George for advice. "Belinda's a friend and someone I've worked with for years," he says. "She came by to do some work on my home in Auckland, so I asked her to have a look. She took it away and came back a few days later with a drawing of this semicircular design."

It's a plan that references marae buildings, with spaces to gather together in and retreat to. Half of the semicircle contains a communal living zone, and the other houses bedrooms, bathrooms and a laundry connected by a breezeway that's open to the outdoors.

"I told Belinda I'd like not to have any windows limiting that space," says Tom. Over-the-wall sliders from First Windows & Doors cater perfectly to this request, opening it – and the front of the living zone – right up.

The flexibility to open and close the bach works purposefully to make days here feel ultra-easy. Site-specific furniture such as the dining table and built-in seating were designed by Belinda, while other pieces, like the outdoor furniture, can be moved to follow the sun, whether for breakfast on the eastern deck, or drinks and dinner beside the outdoor fire in the covered courtyard by the kitchen.

"When I was a kid, we used to play here, and on wet days we'd make our own sleds and come screaming down the hill into this lovely little semicircle above this piece of bush," says Tom. These days, he enjoys swimming and boating out to Poor Knights marine reserve and "there's always plenty to do on the farm itself. On days when I'm an early bird, getting started on the environmental work while the sun rises over the islands is amazing."

Tom's spirit of adventure boded well when realising such a technical design ("The figures required to get this right was huge," he says. "The builders ended up with a lot of timber offcuts around the site with calculations scrawled all over them"), but he mostly puts the ease of the process down to having trusting relationships with the people he was working with.

"The partnership between Belinda and builder Pete Brown was very important," he says. "Pete's built a lot of very good houses on the Tutukaka Coast, so he knows all the right tradespeople."

Thanks to its openings on all sides, there's no formal entrance to this house, but Tom runs an open-door policy for friends who want to grab the keys and head here for some downtime. Being off the grid, it's a place in which to enjoy simple pleasures and a connection to the land captured in the well-planned views and felt through the journey between the public and private zones, making unwinding effortless.

"No matter how long I've been away, I always feel relaxed when I arrive here," says Tom. "When you open up the living space, the scent of the cedar hits you and the warmth is really inviting."

Deliberately informal yet thoroughly considered, at this coastal retreat, time need only be measured by the tide, and the rising and setting of the sun.



Metro Series picture window in Duratec Matt Black



Metro Series bi-parting sliding doors in Duratec Matt Black with Black anodised Elemental hardware



Combination of Metro Series products in Duratec Matt Black with Black anodised Elemental hardware



Combination of Metro Series products in Duratec Matt Black with Black anodised Elemental hardware

Dune landing

A home on the Kapiti Coast finds its place in the environment.

Visit firstwindows.co.nz/dune-landing to watch the video and listen to the podcast



Residential Series ThermalHEART® sliding doors and picture windows in Matt Ironsand and Urbo colour matched hardware

At home in the windswept dunes on the Kāpiti Coast, this small but well-formed coastal home is the antidote to corporate life that many city-dwelling Wellingtonians dream of.

“We were looking around the area and came across the subdivision here before it had been marketed,” says owner Alan Cadwallader. “We were the first to buy a section at the southern end of the estate – and we think we got the one with the best view.”

The site south of Te Horo Beach was not a place for pretension, so once Alan and his partner Peter Corley had found their property, they began their next search – for an architectural practice that could design a building that was sympathetic to the environment and robust enough to endure the elements.

“We were initially drawn to First Light Studio because we’d heard about this young group of architects who’d placed in an international design competition,” says Alan. “We met with directors Anna Farrow and Nick Officer, and thought their fresh approach to design unencumbered by a past legacy would result in a true design-and-build partnership. Also, they were thoroughly nice people to deal with – we made the call after the first meeting that they’d be the architects we’d work with.”

Uninterrupted views of the sweeping coastline and Kāpiti Island are the key features of the outlook to the north and west of Alan and Peter’s new holiday home. Looking back across the land, the Tararua Range rises along the eastern side of the state.

“It’s a pretty extreme environment out here and there’s a strong prevailing wind coming off the coast,” says project architect Anna.



Residential Series ThermalHEART® picture windows in Matt Ironsand



Residential Series ThermalHEART® picture windows in Matt Ironsand

“Our aim was to work with these extremes, and also to work against them to help our clients live comfortably indoors and out, regardless of the weather.”

“The nature of the topography and the ground was really like building in a sand dune,” says Nick. “It’s constantly shifting as the wind and sea change. I remember building our first computer model of the topography and it was so undulating that it crashed our software.”

In order to nestle the home naturally into the landscape, the team opted to slide off the top of the dune designated for the building platform. “The idea was to have the roof hovering over the space to emulate the dune that came before it,” says Anna. A band of clerestory windows from First Windows & Doors surrounding the living area separates the roof from the rest of the building and lends the architecture a lightness.

Having the Kapiti Island focal point located west provided some challenges in terms of how the openings in that direction would be impacted by the sun and wind. “We really strategised where those windows were going to go,” says Anna. “There are sliding doors centred on the kitchen island, so when you’re preparing dinner there, Kāpiti Island is framed, and the picture window at the end of the dining area looks straight out to the coast when you’re gathered around the table. It was all about framing the views in certain places to get the most enjoyment out of those moments.”

Conceived as a coastal house that will end up as a permanent home, the floorplan accommodates the ebb and flow of guests with a clear division between public and private zones. “There are two different boxes of building, and there’s a stylistic change between them,” says Anna. “When you leave the lofty entertainment space and pass through to the sleep space, the ceiling height drops much lower and the rooms are more intimate, so it really feels like you’re retreating.”

Small and smart architecture is the driving force at First Light Studio, and a sustainable ethos underpins their practice. As well as utilising passive solar principles, for this project, they designed the home to be self-sufficient through rainwater collection off the roof, a fire and wetback for heating the house and water, and a natural flow system to deal with wastewater.

And sustainability doesn’t stop with the architecture. “Restoring the landscape to something like what would have been here before it was farmland was important for us from the outset,” says Alan. “We wanted to create something of a native oasis in a challenging environment. We best describe it as the land having lost its memory; it was regenerating with pest weeds, so we’ve had to invest time and effort into clearing them and keeping them from coming back, while establishing plants that will thrive.”

For Alan and Peter, occupying the home has been the most rewarding part of the process, but Alan says they felt very fortunate throughout. “First Light understood our brief and did a lot of the heavy lifting on the detailed decision-making. They brought in builders Pinnacle Construction during the design process, so there was common understanding of what we were aiming to achieve, and because they’d worked together before, the translation of design to build was seamless. It was a stress-free build for us, and we’d happily do it all over again.”

A few short years since they first broke ground, the couple are already reaping the rewards of the hard work they’ve put into creating their coastal bolthole, connecting with the rhythms of the day and living in the landscape.



Residential Series ThermalHEART® picture windows in Matt Ironsand



Residential Series ThermalHEART® picture windows in Matt Ironsand

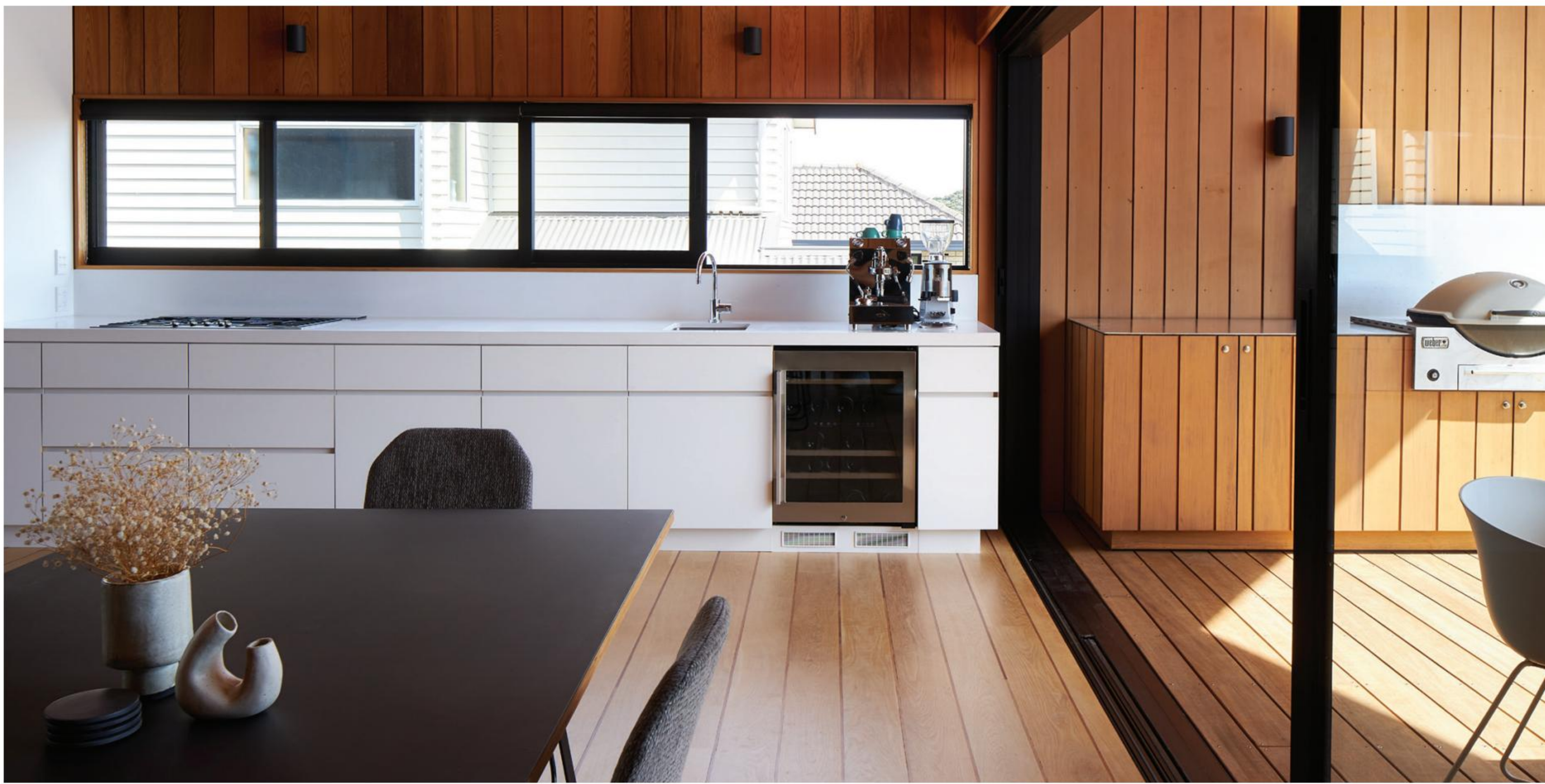
Push the limits

All the great things about a classic bach are included in this Mt Maunganui holiday home – but better.

Visit firstwindows.co.nz/pushthelimits to watch the video and listen to the podcast



APL Architectural Series stacker sliding doors and a Metro Series picture window in Black Anodised with Urbo Matt Black hardware



Metro Series sliding windows and APL Architectural Series stacker sliding doors in Black Anodised with Urbo Matt Black hardware

The great Kiwi beach holiday is a nostalgic memory embedded in our national psyche – the days gliding along carefree, revolving around swims, barbecues and yarns into the evening, preferably around a fire. For Sue and Paul Webber, many of the memories they’ve created with their family have centred on a single plot of land at Mt Maunganui.

Originally owned by Paul’s auntie, a small 1950s fibrolite cottage once sat on this site, which the couple have enjoyed for 40 years – since they were married, during their children Rachel and Tim’s childhoods and now with their grandchildren too. They purchased the section in 2000, but it wasn’t until more recently – with the growing brood of aforementioned grandchildren – that they felt as if they’d outgrown the diminutive bach.

Having previously connected with Paul Clarke of Studio2 Architects during the renovation of their home in Auckland, the Webbers were confident that their brief for a modern generational retreat would be wholly met. Their long-term working relationship had built a level of trust that meant they and architect Paul were already on the same page and able to jump straight into the design process, bypassing the getting-to-know-you stage.

The beach, mountain and town are the principal locators here. Set within a high-density suburban area, the push and pull between seeking views and creating privacy informed the plan for a contemporary holiday home that maximises the section.

“The site was quite interesting,” says Paul Clarke.

“Often for a family, you want to create something that’s grounded, but there was also an opportunity here to push the limits to appreciate the view.” The solution was to extrude the building upwards, giving them a lot more space to play with.

The three-bedroom, pitched-roof home tackles privacy playfully, with stained cedar battens shrouding the ground floor at street level. To accommodate the narrow frontage, landscaping guides you to an entry at the side of the house, where you’re welcomed by an oversized timber door handle – the first of many crafted details designed to surprise and delight.

The journey inside takes you purposefully up the stairs to the kitchen positioned on the first floor between the east-facing dining zone and west-facing lounge. Rising right to the roof, the expanse of joinery from First Windows & Doors at both ends of this gabled form lets abundant light into this living space throughout the day.

“The lovely thing about this house is that the plan is very simple and yet there are moments in the design to be revealed,” says Paul Clarke. You go out to the street side and there’s a connection to the mountain. Then, taking shelter under the eaves, you’re far enough back from the terrace and street that this outdoor area, you can withdraw to the kitchen, where you also get glimpses of the Mount and can turn to the living spaces to catch the view out to the port.

Customer Story

“What we were wanting to do, especially with the connection to the terrace upstairs, is open the whole thing up,” he continues. “Being able to manipulate and adapt the joinery is really important to us, and we needed a joinery suite that would sit in the background but look and feel like there’s quality there. The APL Architectural Series sliding doors create the ability to transition seamlessly between inside and out.”

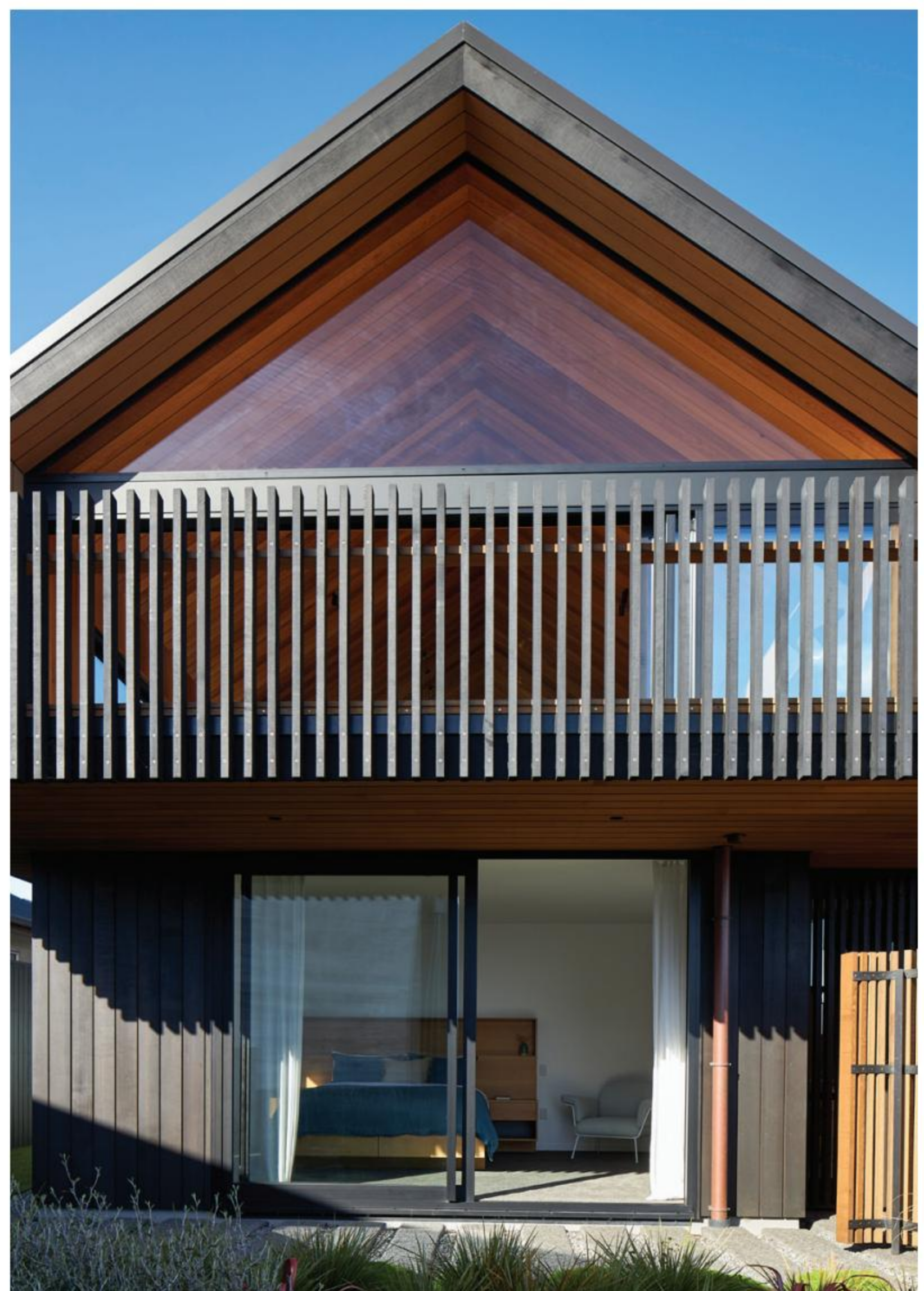
He says he loves the idea of the kitchen being an extension of the outdoor barbecue area. “With a slim cavity in the benching, the joinery slides between the two work surfaces, opening up to act like a bar. You can shift the food along the bench for a buffet, then chuck it on the table. There’s a little bit of process there, but it reflects the way Kiwis like to live. We wanted this home to function really well, to make holiday life as easy as possible.”

Furniture by the couple’s son Tim, of Tim Webber Design, defines this spacious rectilinear zone. Downstairs, the bedrooms and bathrooms also include pieces from his collections and take in their own private views of the native garden.

Bach-y conveniences have indeed been cleverly considered here, from the outdoor shower that makes light work of salt and sand, to the cedar shutters that make lock-and-leave security visually pleasing. They’re part of a timeless palette of honest materials that bring a natural warmth to this home. It’ll no doubt serve the Webbers for generations to come.



APL Architectural Series sliding door in Black Anodised with Urbo Matt Black hardware



APL Architectural Series sliding door and Metro Series picture window in Black Anodised with Urbo Matt Black hardware



APL Architectural Series sliding doors and Metro Series picture window in Black Anodised with Urbo Matt Black hardware

Brain boxes

This clever abode is smarter than many in terms of both form and function.

Visit firstwindows.co.nz/brain-boxes to watch the video and listen to the podcast



Metro Series bi-fold doors in Matt Black with Urbo colour matching hardware

Making your way through a valley where Hamilton's city limits meet Waikato pastures, you can't miss Kylie and Noel Jessop's new home. A dark form rising from the ridgeline catches your eye on approach, though it's not until you're much closer that you realise this glistening upper storey is clad with a glossy membrane of fish-like scales.

"The metal scales were an idea I wanted to experiment with to give the exterior depth and texture," says Noel. When you're an architectural designer, that's the sort of thing you get to trial when you're crafting your own abode. It becomes a testing ground for pushing ideas further than you might get to with your clients.

The couple hadn't really been looking for a personal project, but their blended family with four kids in the mix had fueled a need for more space and a desire for a carefree rural lifestyle.

"After working with a client of mine in the area and mulling over subdividing with them, I spotted this section on Trade Me purely by chance," says Noel. He and Kylie had spent



Metro Series over-the-wall sliding doors and Residential Series awning windows in Matt Black with Urbo colour matched hardware

a bit of time in the area and already had an emotional connection to it. They knew they'd found the spot in which to build a home designed to bring them all together.

The intelligent architecture here is guided by the aspect of the site. What was once a hilly paddock with an old shed plonked in the middle now houses a ground floor clad in timber topped with a smaller second storey that's cantilevered out on both sides of the building. This upstairs structure does double duty as a veranda over the outdoor dining area at the front of the house and as a carport at the back.

"I could make a joke about how my friends view architecture," says Noel. "They say we're really good at designing boxes, but we could only afford the two-box option for our place: the long box and the short box."

The ground floor spreads out from the entry at the rear of the house into an open-plan kitchen, dining and living area at one end, and the main bedroom and ensuite at the other. This level is divided into two by stairs that lead

up to the kids' zone, where Carter (11), Aja (8), Jayden (6) and Layla (4) each have their own bedroom, along with a shared bathroom and hang-out space.

A monochrome scheme that doesn't detract from the view, the interior palette includes surfaces selected to withstand the hard knocks of family life. Larch battens on the ceiling and concrete underfoot add texture and warmth. Organised around a long island bench, the simplicity of the kitchen belies the plentiful storage behind the handleless cabinetry that extends along the wall to form built-in rest stops also used for stashing books and displaying mementos.

Interconnectedness was a key consideration that allows the kids to roam inside and out, and Kylie and Noel to keep an eye on them from wherever they are. APL Architectural Series sliding doors with a fixed window at one end span the communal zone, allowing the entire space to be opened out to the deck and lawn. At the end of the living area, a covered deck extends towards the west – the ideal spot for a sundowner. The couple's bedroom and ensuite make use of

Customer Story

First Windows & Doors Metro Series over-the-wall sliding doors to access the pool and take in the sweeping 180-degree view across the city to Mt Te Aroha beyond.

“We didn’t want any walls because we didn’t want anyone to be left out anywhere,” says Kylie. “So whether you’re in the kitchen or the lounge or out on the deck, you’re never far away from everyone else. With four kids, we’re really thankful for the massive backyard too. That was a huge thing for me. I wanted the kids to be able to be kids – to ride their bikes and do whatever they want outside and for us to know they’re safe.”

“On the practical side of things, the flexibility to increase the size of the spaces here is great for accommodating a large family in not a large house,” says Noel. Their ability to expand and contract different areas to allow inside and out to function together works well for both the family’s everyday life and the regular stream of visitors who drop by to soak up some of the rural good vibes.



Residential Series awning windows in Matt Black with Urbo colour matched hardware



Metro Series over-the-wall sliding doors in Matt Black with Urbo colour matched hardware



Metro Series over-the-wall sliding doors and roof window in Matt Black with Urbo colour matched hardware

Best-kept secrets

Stepping into this home reveals even more than you might expect.

Visit firstwindows.co.nz/bestkeptsecrets to watch the video and listen to the podcast



APL Architectural Series sliding door in Matt Black with Black anodised Elemental hardware

In the central Auckland suburb of Westmere, a neighbourhood of tree-lined streets flanked by heritage bungalows and villas, the frontage of this family home by Tim Dorrington tells little of the laid-back lifestyle that plays out on the inside. Director of Dorrington Atcheson Architects, Tim has known homeowners Ginny and Dave Openshaw for a very long time, and while devising the plans for a new dwelling for them and their children Sam and Sophie, the old friends spend many a night mulling over different forms, philosophies and references.

“Not to be un-neighbourly, but there’s no view out that way [to the street], so Dave and I came up with the idea of the ‘stealth bomber’ – we were trying to be secretive and wanted to create a surprise when you come through the house,” says Tim of the inspired result of their discussions.

This goal to generate a sense of a reveal from the home’s entry was encouraged by the expansive view from the rear of the property out across the bordering reserve to the bay beyond. “You can’t see anything from the front door, then suddenly you see the courtyard, then the journey continues on down the hallway to the living area, where the view of the park opens up,” says Tim.

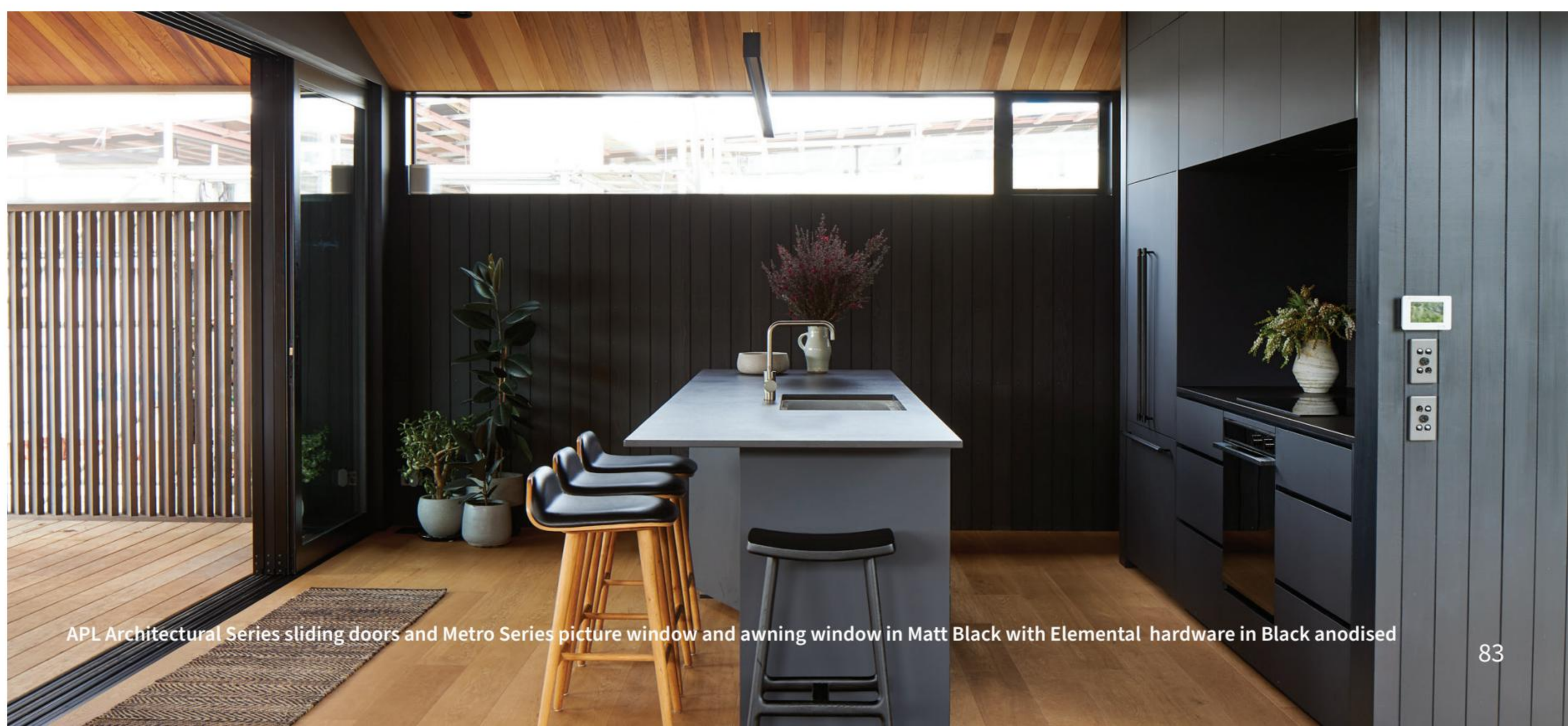
The first floor of the home is arranged in a dumbbell shape, with the entry, garage and main bedroom at one end, and open-plan kitchen, dining and living spaces at the other. They’re connected by a leafy courtyard that maximises light while maintaining privacy. Downstairs is Sam and Sophie’s domain – a kid-friendly hangout comprising two bedrooms and a bathroom on either side of the playroom, plus easy access to the backyard with its pool, spa, basketball hoop and path down to the park.

“Psuedo-intentionally, the main bedroom is at the furthest possible point from the kids’ spaces,” says Tim. This configuration provides the sort of sanctuary parents dream of, complete with an ensuite tiled in a soothing sage green and a glassed folly housing a single palm tree (“the world’s smallest courtyard”, Tim calls it) providing a sensory experience, particularly on rainy nights.

“Indoors and out, we look at windows as holes in walls or an absence of wall, but we’ve really tried to work with the absence of wall here,” says Tim of the overall strategy. Stacker sliding doors from the APL Architectural Series were specified in both the kitchen and dining areas, and “once they’re open, the deck becomes part of the kitchen and the courtyard becomes part of the dining – so you can really open up that barrier between inside and out. Very few windows here are holes in walls as such – they’re all about trying to give you an experience that’s different to what a wall would, giving you facility to interact with the inside and outside.”

Transitions between spaces were considered as carefully as the rooms themselves in this house, with the hallway given special attention so it became gallery-like. A row of high north-facing windows from First Windows & Doors’ Metro Series opens electronically, casting pleasingly orderly shadows over the black tongue-and-groove panelling that conceals the guest bedroom, guest bathroom and laundry.

This black wedge of the hallway comes to an end in the dark-coloured kitchen, in which a splashback of mosaic tiles made from recycled computer parts add a textural element to the minimalist scheme. The appliances are integrated, and a scullery is tucked out of sight to ensure



APL Architectural Series sliding doors and Metro Series picture window and awning window in Matt Black with Elemental hardware in Black anodised

Customer Story

the open-plan living spaces appear as uncluttered as possible.

Bagged brick was used on the living area's north facing wall for both practical and textural effect. "We wanted something solid here, as you're about 2m away from the neighbouring house," says Tim. "But we also limited the height of the wall to three-quarters and placed horizontal slot windows above the brick, so you get the feeling of space. Because the windows are full-length, it almost feels like there's no wall, and with the build-ins surrounding the living zone, you barely notice the wall."

The vertical orientation of the home's interior linings and the cedar-batten cladding on the exterior creates a visually cohesive and succinct look, and adds detail to the angular walls ascending to vaulted cedar ceilings that accentuate the generous, volume of the indoor and outdoor living spaces. These angles cleverly make these areas seem both bigger or smaller according to the ebb and flow of family, providing spots in which to gather and others in which you can spirit yourself away to enjoy a sunny corner and a cuppa at any given time of the day.

Fit for life as the Openshaws know it right now, this is a home designed to accommodate the journey of raising a family, and they're not about to outgrow it anytime soon – their 'stealth' sanctuary that's so much more than meets the eye.



APL Architectural Series picture windows and casement window in Matt Black with Black anodised Elemental hardware



Metro Series picture windows in Matt Black

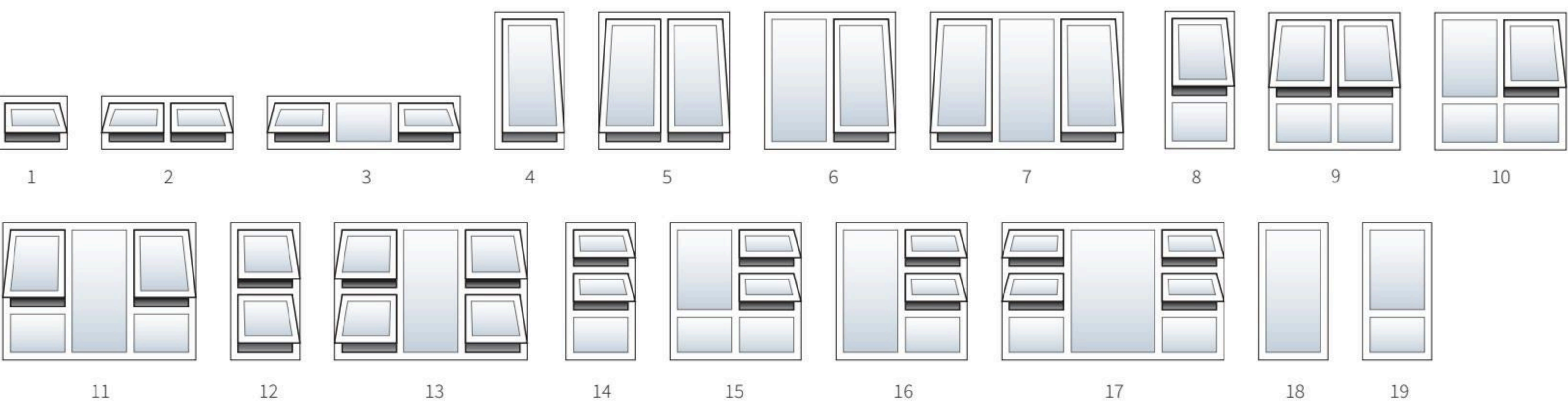


A combination of products in Matt Black

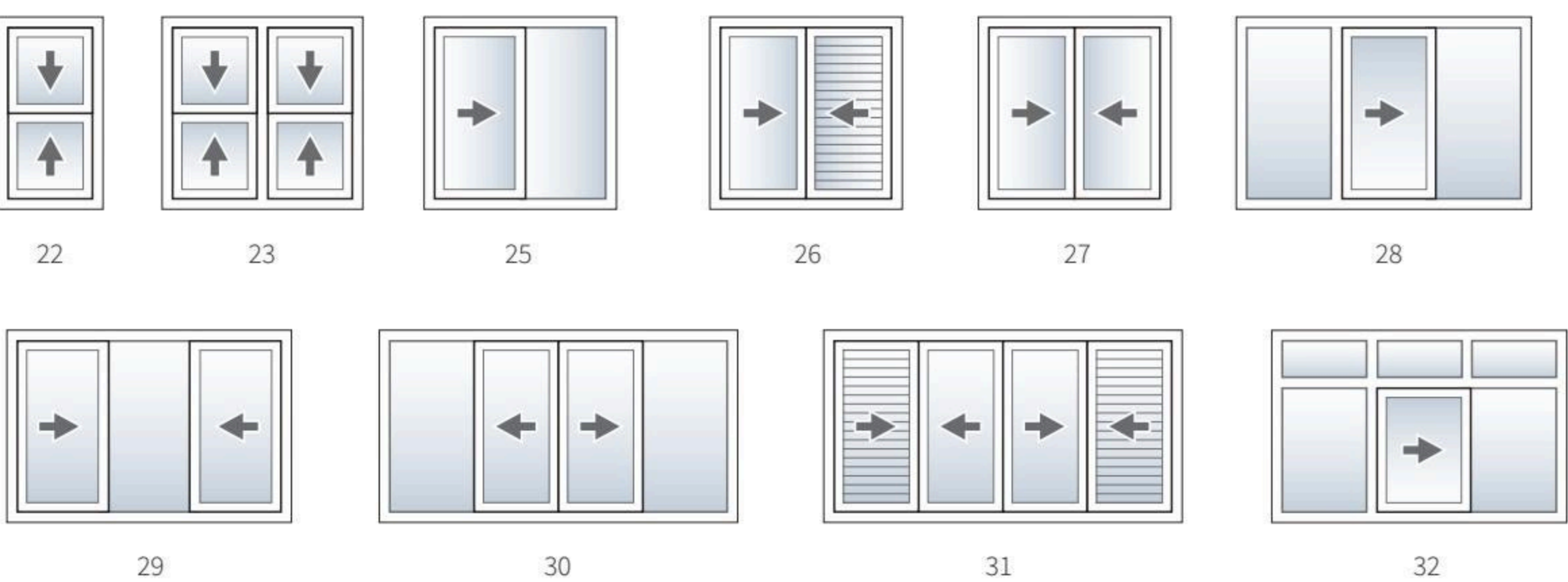
Window Configurations

Awning Windows

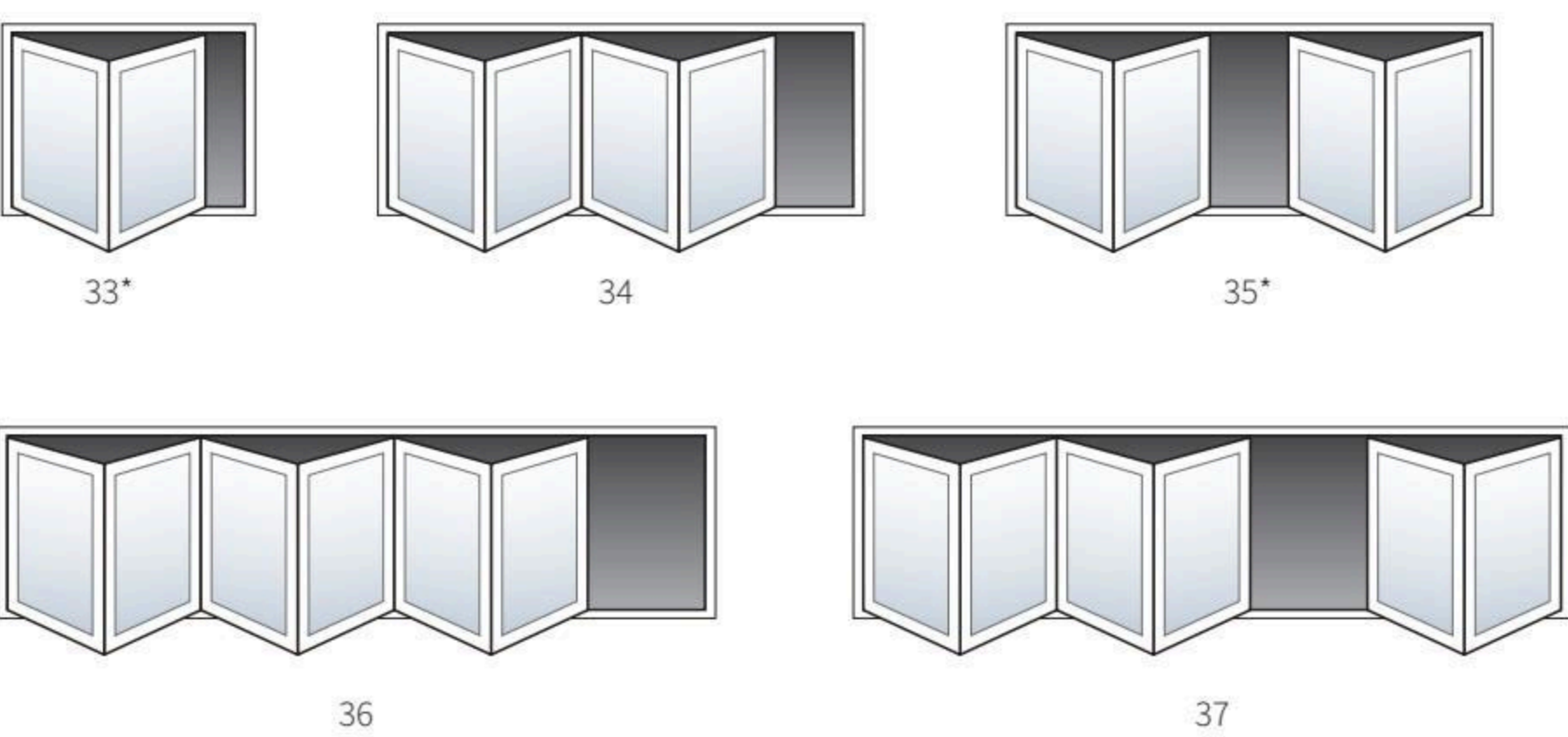
Many of these windows can also be made as casement (side opening) windows



Sliding Windows



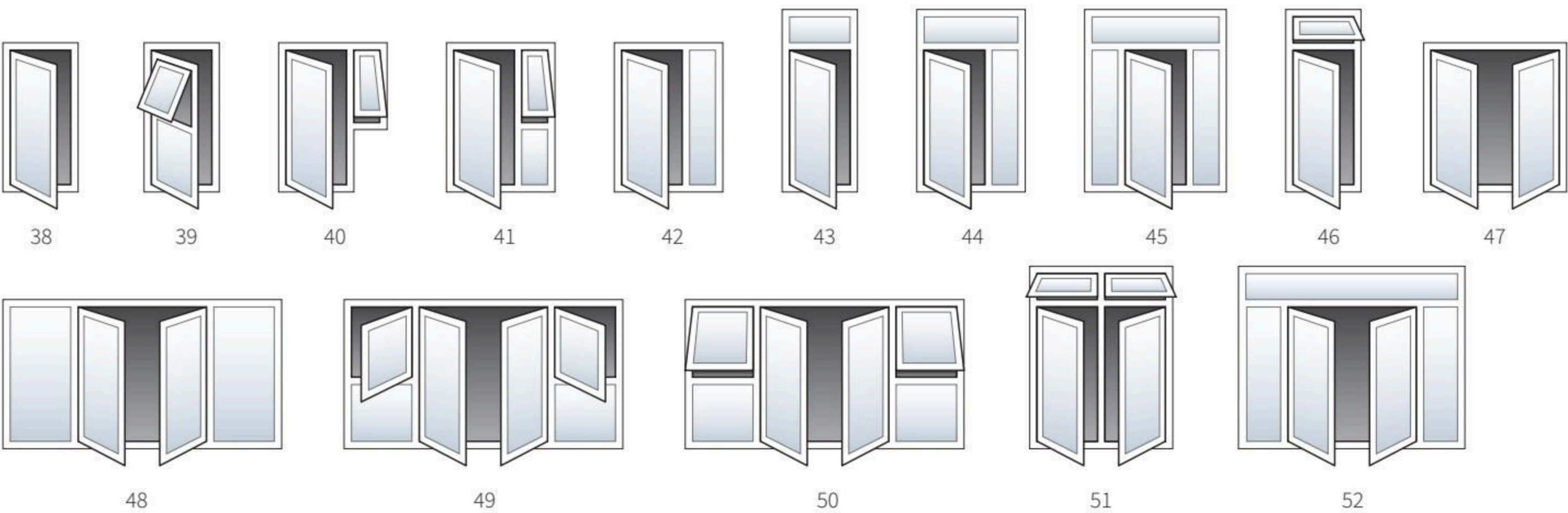
Bi-fold Windows * Indicates bi-fold set is available in layback.



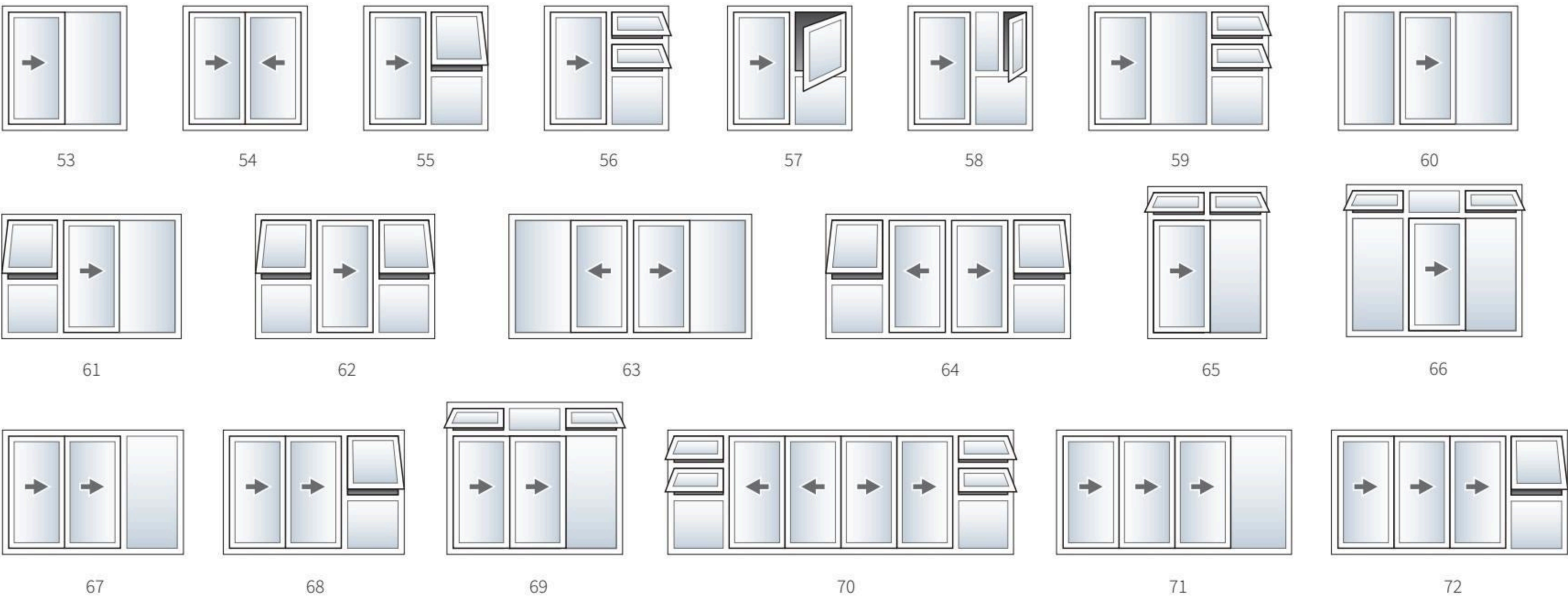
All units viewed from the exterior. Configurations are subject to change.
Please consult your local First Windows & Doors manufacturer for further information.

Door Configurations

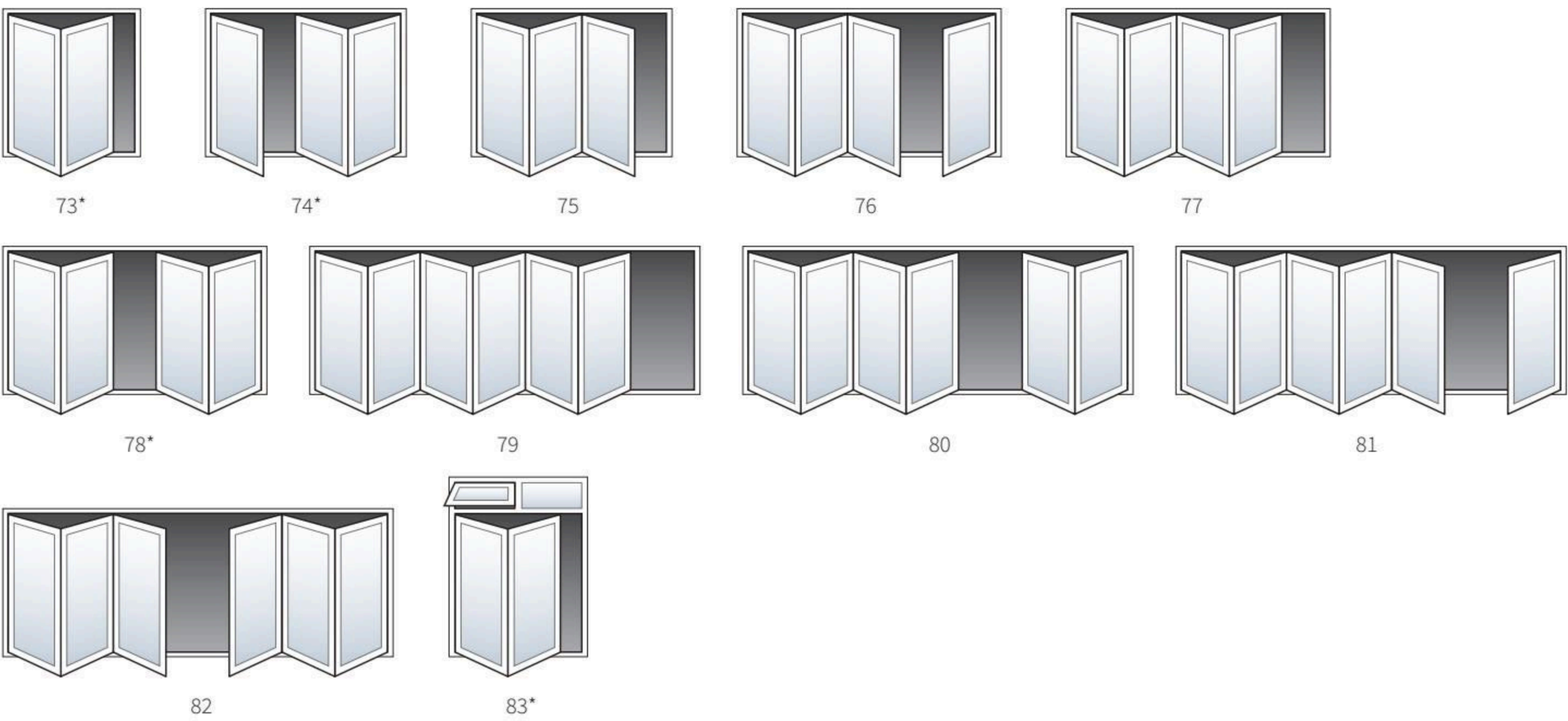
Hinged and French Doors



Sliding Doors



Bi-fold Doors * Indicates bi-fold set is available in layback.



Care and Maintenance

First Windows & Doors products meet all statutory warranty requirements and are fully tested to ensure compliance with the New Zealand Building Code. Regular maintenance is needed to keep your warranty valid. If you want your joinery to be looking at its very best for years to come, these simple steps will help.

For windows and doors

- Clean and remove builder's debris and dust inside of sills
- Clean once every three months – more often in coastal or industrial environments, ideally once a month
- Clean with a soft brush, warm water and mild household detergent. Rinse with fresh water
- Remove build-up in door tracks
- Abrasive steel wool, scrapers, scouring liquids, solvents and thinners will damage the finish
- Exposure to excessive heat, heaters or hot air guns may damage the surface finish.

Please be aware that powdercoating can be damaged by some sunscreens. The damage occurs when skin which has sunscreen on it has touched the powdercoated metal surface.

For hardware

- Clean powdercoated hardware with a wet sponge or soft brush, warm water and mild detergent and rinse with fresh water
- Clean plated product with a wet sponge or a dry duster. Never use detergent on plating
- Clean stainless steel hardware regularly. It is resistant to rust; however rust spots can occur. Remove with a mildly abrasive cleaner and rinse with fresh water. For heavy corrosion, use Scotch-Brite hand pads. We recommend regular treatment with 3M Stainless Steel Cleaner and polish to further enhance stainless steel hardware.



For glass

- Only use detergents and cleaning solutions recommended for glass
- Soak glass first to loosen dirt, then use a mild, non-abrasive solution
- Rinse with water, as cleaning residue can permanently mark glass.

Smartwood maintenance

To comply with warranty requirements and ensure longevity of Smartwood windows and doors:

- Seal interior timber face immediately after installation, using an appropriate finish and to manufacturer's instructions
- Oil or stain will need to be reapplied every few years.

Home of quality brands



The First Windows & Doors brand is owned by APL Window Solutions, New Zealand's leading window systems company.

As part of the largest supplier of windows and doors in the country, our commitment to 'all things local' began when APL did - in 1971. For us, it starts with our products which is why everything we manufacture is designed and tested for New Zealand buildings and take into consideration our country's unique landscape and environment.

We live in a slice of paradise, so we're committed to reducing our environmental footprint to make the future better for generations of Kiwis to come.

At APL, it's all about quality. From aluminium extrusion to surface finishing, specialised manufacturing, and distribution, we continually invest in leading-edge products and processes.

APL also brings scale. We have New Zealand's largest extrusion plant, an in-house powdercoating facility, a world-class double glazing facility, and a manufacturing subsidiary for specialised aluminium work. We use our distribution fleet to make sure the product arrives to our manufacturers in the best possible condition.

An extensive network of First Windows & Doors manufacturers stretches throughout New Zealand. These businesses are individually owned and operated, with local knowledge and expertise to assist with your next building or renovation project. They are exclusive providers of the First Windows & Doors range of products.

See our website for manufacturers details or visit your local First Windows & Doors manufacturer to view our wide range of windows and doors.

firstwindows.co.nz



